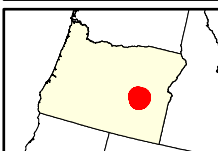
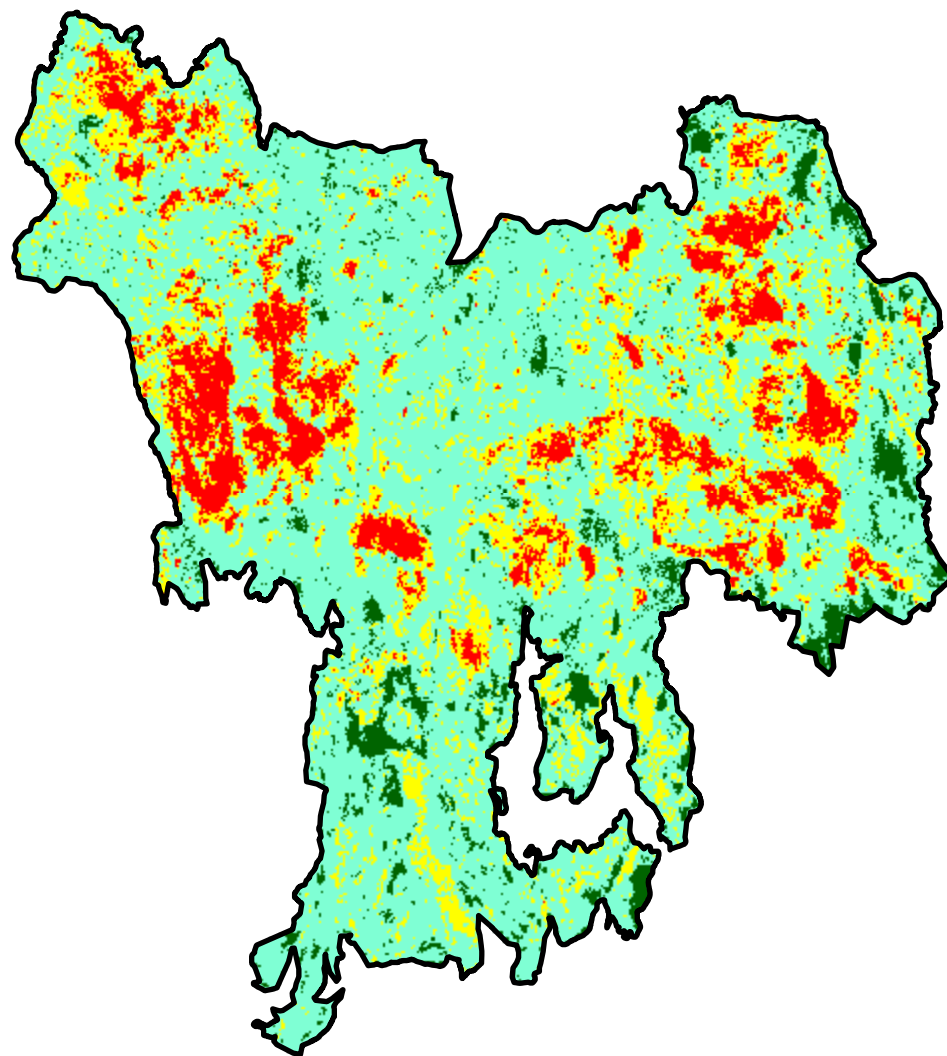
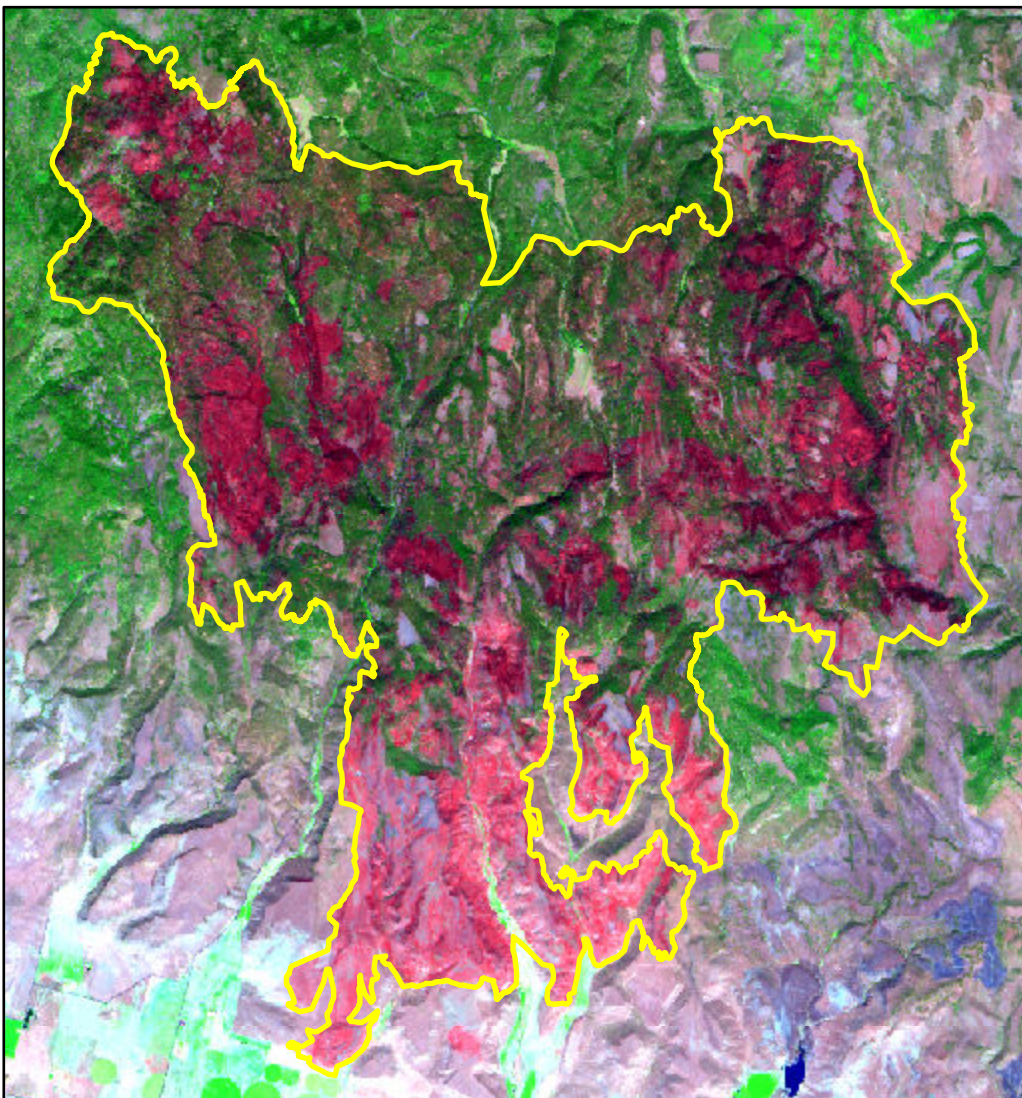


2024 Oregon: TELEPHONE

or4375811886220240722



Latitude: 43° 43' 48.0"
Longitude: -118° 46' 30.0"
Fire Ignition Date: July 22, 2024
Assessment Type: Initial
Pre-Fire Image Date: August 27, 2023 (S2A)
Post-Fire Image Date: September 05, 2024 (S2B)



Acreage of Burn Severity

Burn Severity	Acres
Unburned to Low	3,556
Low	34,105
Moderate	10,904
High	5,590
Increased Greenness	2
Non-Processing Area Mask*	0
Total	54,156

This map portrays fire severity for the fire specified in the map title and summarizes proportions of fire severity classes. These data are produced under the Provisional Initial Assessment (PIA) mapping project jointly implemented by the USGS EROS and the USFS GTAC. The PIA mapping project ascertains the locations of fires based on available fire occurrence information provided by federal and state agencies, and other reliable sources. The PIA mapping project reserves the right to correct, update or modify geospatial inputs to this map without notification.

0 3 6
Miles