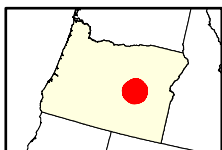
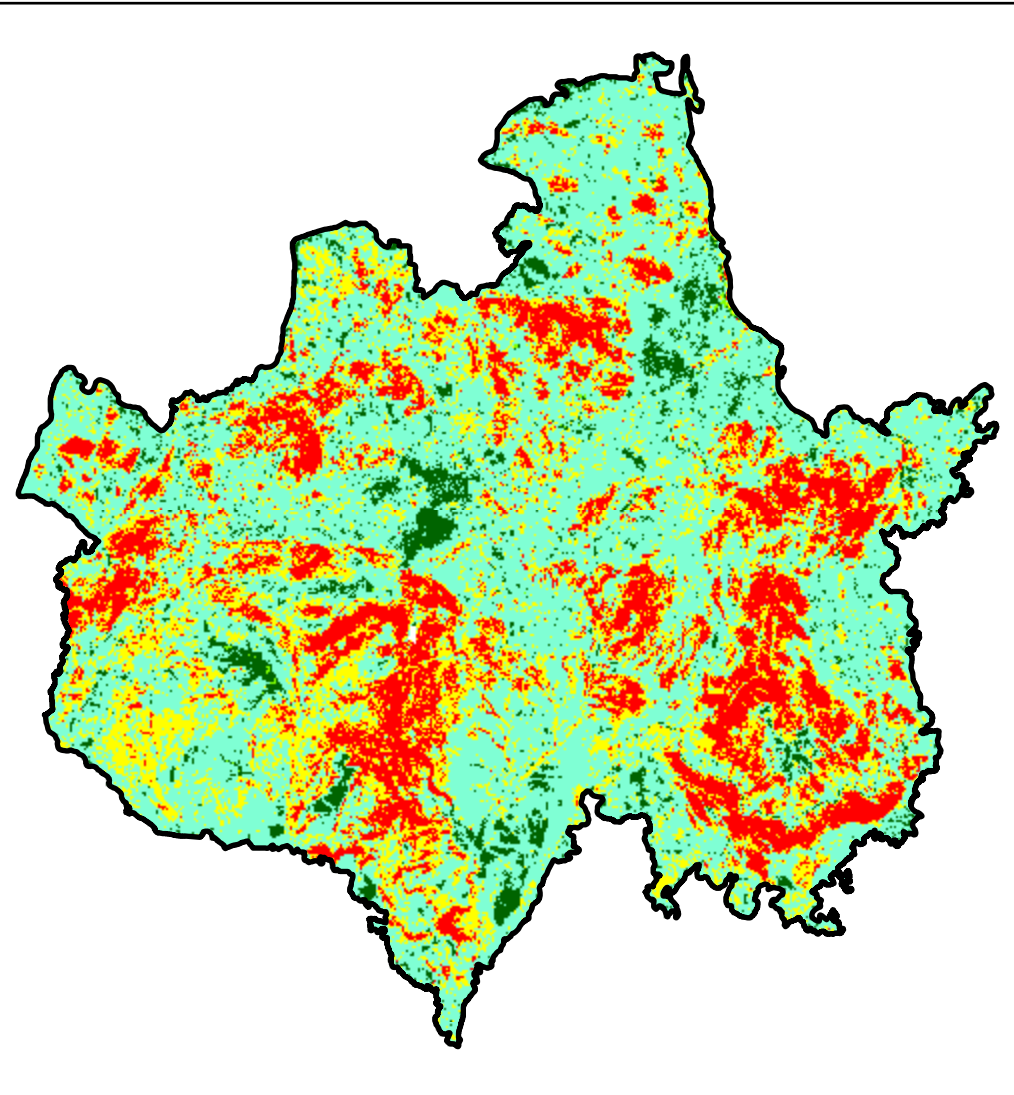
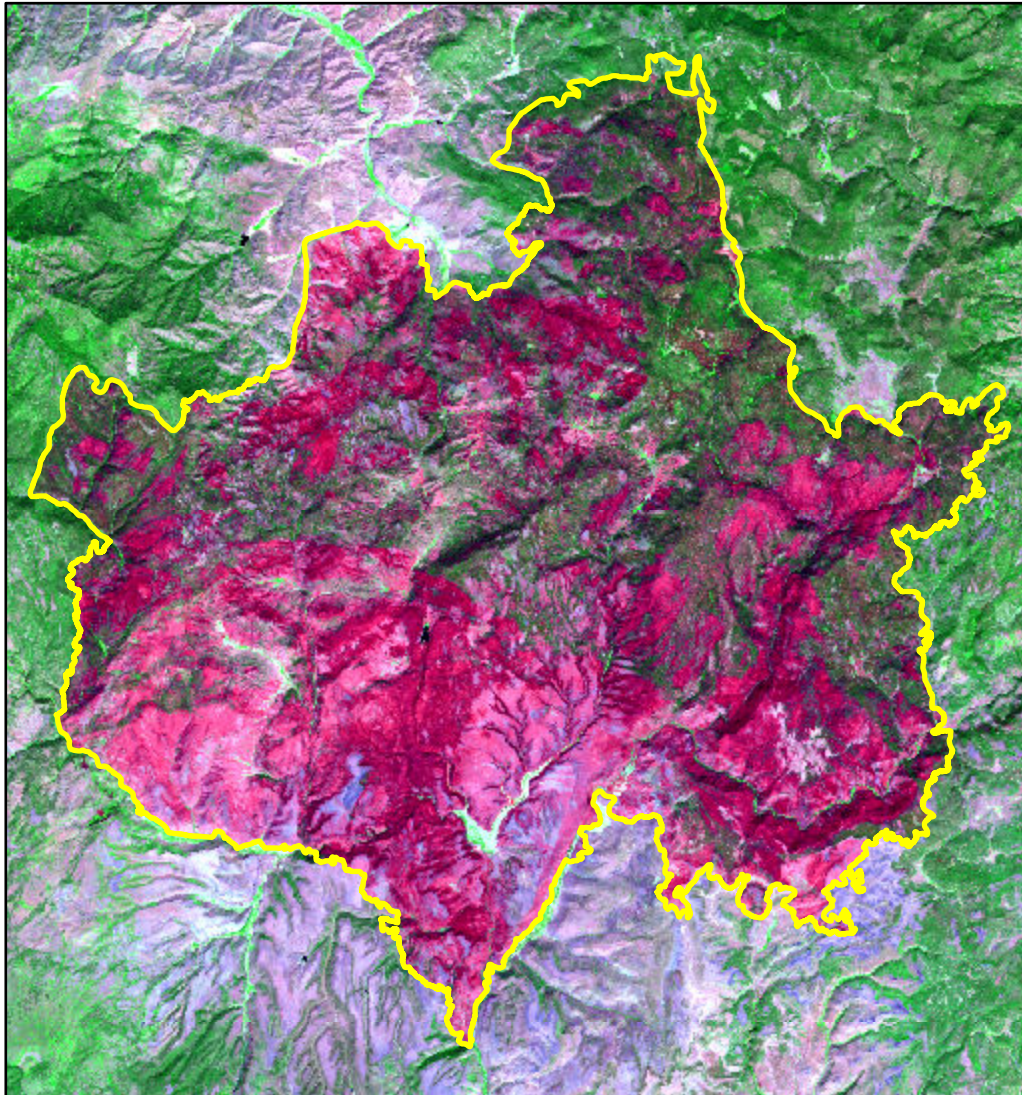


2024 Oregon: FALLS

or4385311942720240710



Latitude: 43° 55' 04.8"
Longitude: -119° 14' 27.6"
Fire Ignition Date: July 10, 2024
Assessment Type: Initial
Pre-Fire Image Date: September 01, 2022 (L9)
Post-Fire Image Date: August 29, 2024 (L8)



This map portrays fire severity for the fire specified in the map title and summarizes proportions of fire severity classes. These data are produced under the Provisional Initial Assessment (PIA) mapping project jointly implemented by the USGS EROS and the USFS GTAC. The PIA mapping project ascertains the locations of fires based on available fire occurrence information provided by federal and state agencies, and other reliable sources. The PIA mapping project reserves the right to correct, update or modify geospatial inputs to this map without notification.

0 5.5 11 Miles

Acreage of Burn Severity

Burn Severity	Acres
Unburned to Low	9,711
Low	89,736
Moderate	37,147
High	29,704
Increased Greenness	125
Non-Processing Area Mask*	33
Total	166,456