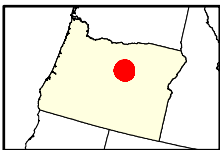
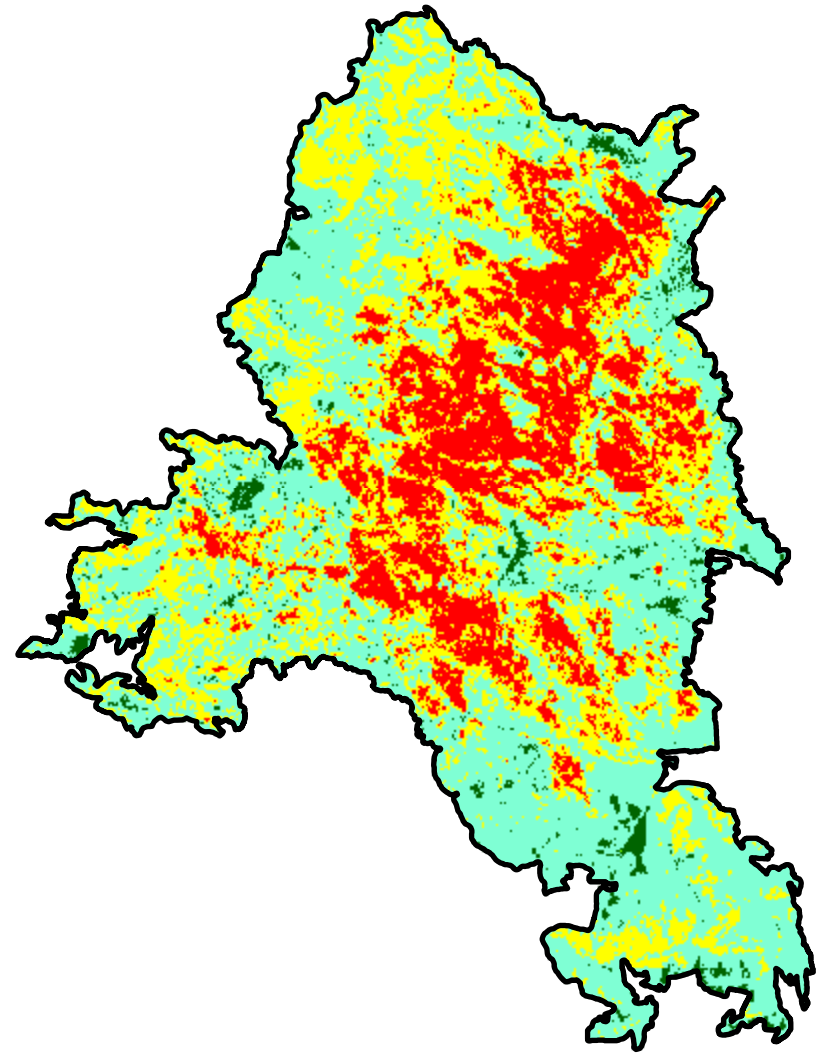
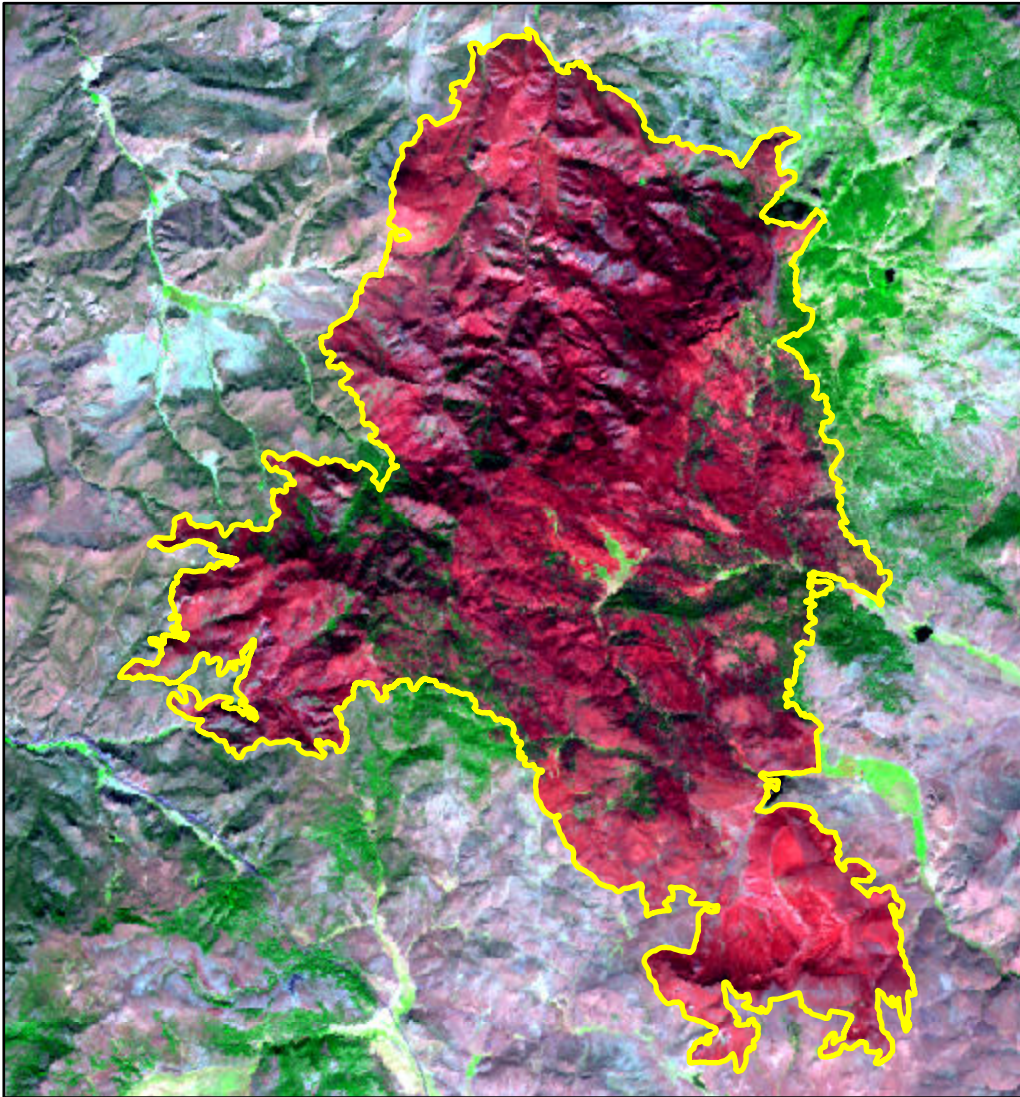


2024 Oregon: SHOE FLY

or4463012003820240902



Latitude: 44° 37' 01.2"
Longitude: -119° 59' 45.6"
Fire Ignition Date: September 02, 2024
Assessment Type: Initial
Pre-Fire Image Date: September 19, 2023 (L8)
Post-Fire Image Date: September 29, 2024 (L9)



This map portrays fire severity for the fire specified in the map title and summarizes proportions of fire severity classes. These data are produced under the Provisional Initial Assessment (PIA) mapping project jointly implemented by the USGS EROS and the USFS GTAC. The PIA mapping project ascertains the locations of fires based on available fire occurrence information provided by federal and state agencies, and other reliable sources. The PIA mapping project reserves the right to correct, update or modify geospatial inputs to this map without notification.

0 2.5 5 Miles

Acreage of Burn Severity

Burn Severity	Acres
Unburned to Low	767
Low	13,066
Moderate	8,570
High	4,855
Increased Greenness	0
Non-Processing Area Mask*	0
Total	27,258