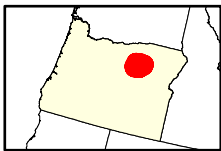
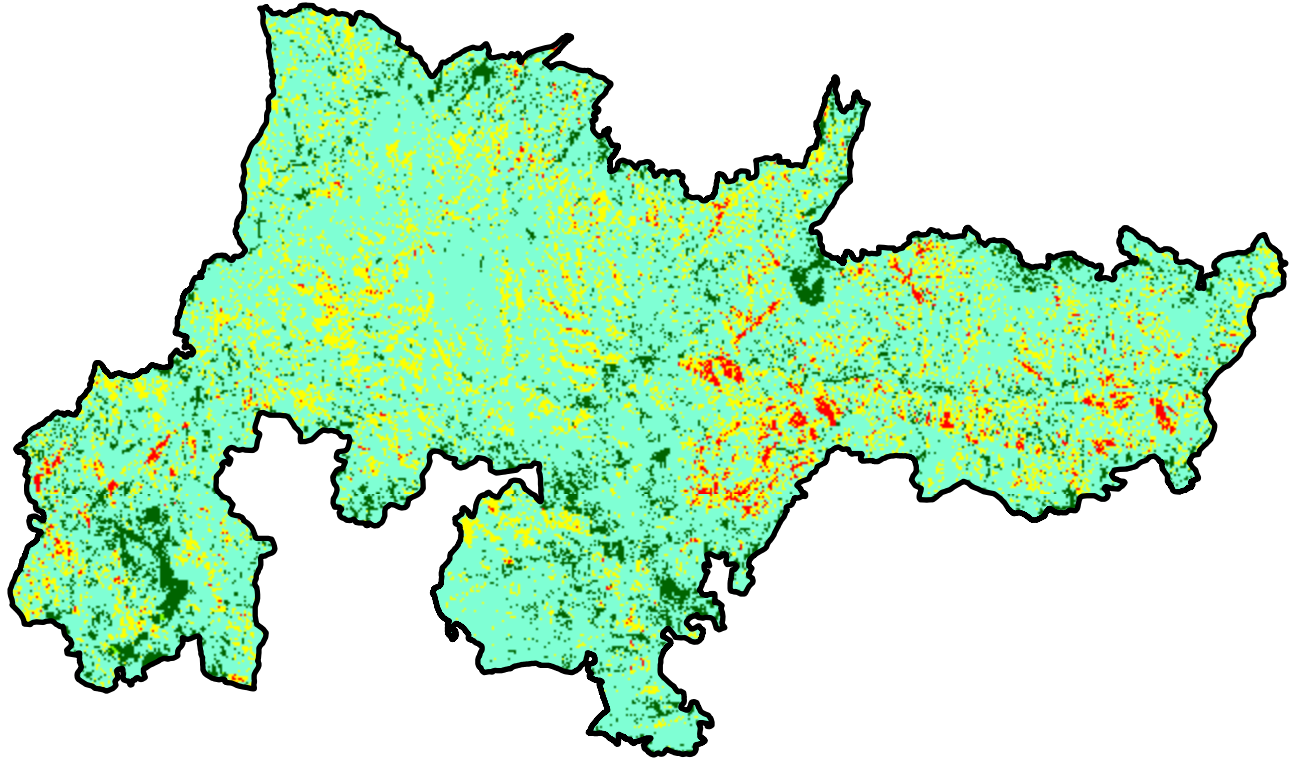
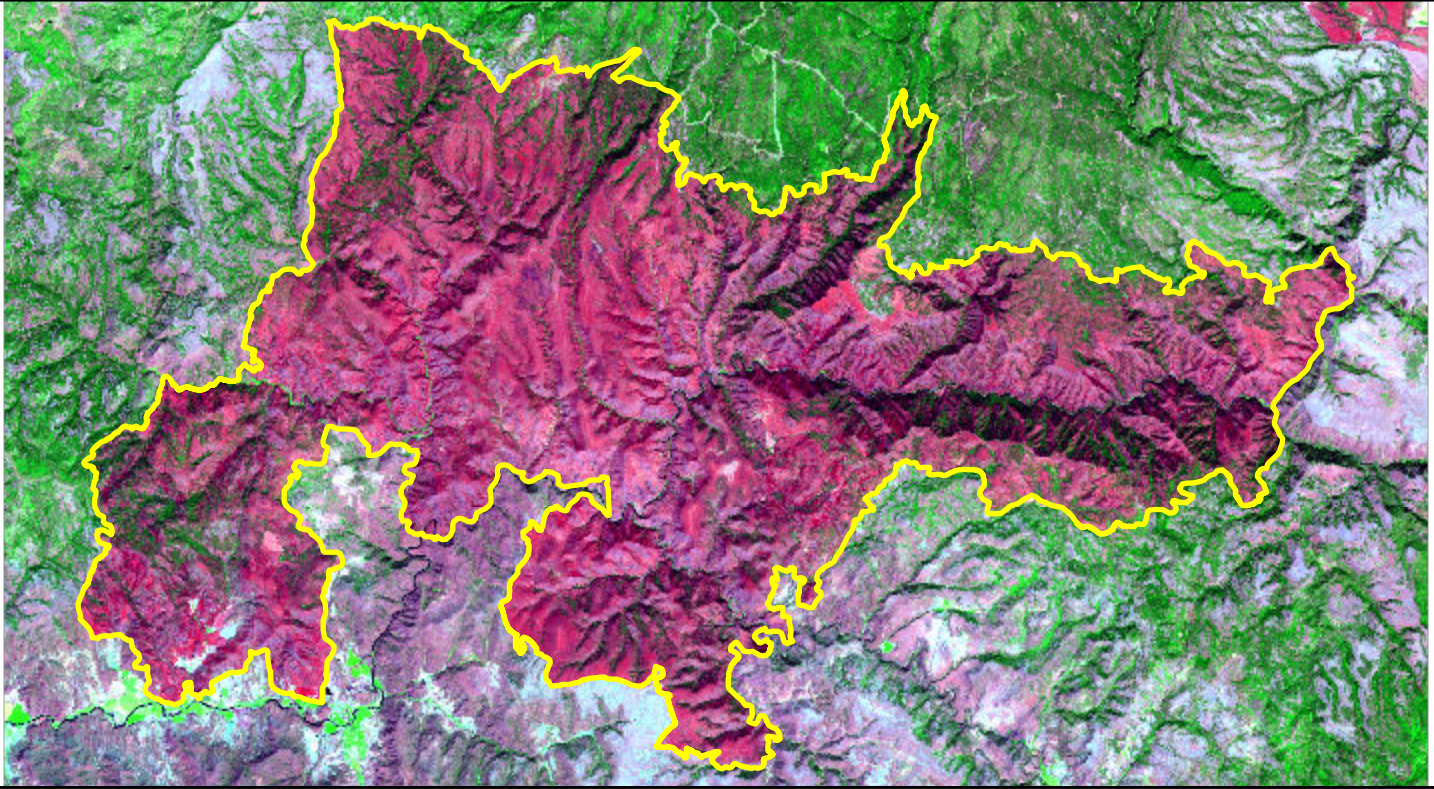


2024 Oregon: MONKEY CREEK

or4500911918620240718



Latitude: 44° 56' 52.8"
Longitude: -119° 16' 33.6"
Fire Ignition Date: July 18, 2024
Assessment Type: Initial
Pre-Fire Image Date: August 10, 2023 (L9)
Post-Fire Image Date: August 28, 2024 (L9)



Acreage of Burn Severity

Burn Severity	Acres
Unburned to Low	15,730
Low	132,421
Moderate	29,591
High	3,372
Increased Greenness	57
Non-Processing Area Mask*	0
Total	181,170

This map portrays fire severity for the fire specified in the map title and summarizes proportions of fire severity classes. These data are produced under the Provisional Initial Assessment (PIA) mapping project jointly implemented by the USGS EROS and the USFS GTAC. The PIA mapping project ascertains the locations of fires based on available fire occurrence information provided by federal and state agencies, and other reliable sources. The PIA mapping project reserves the right to correct, update or modify geospatial inputs to this map without notification.

0 6 12 Miles