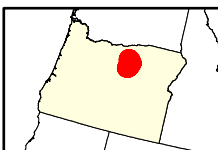
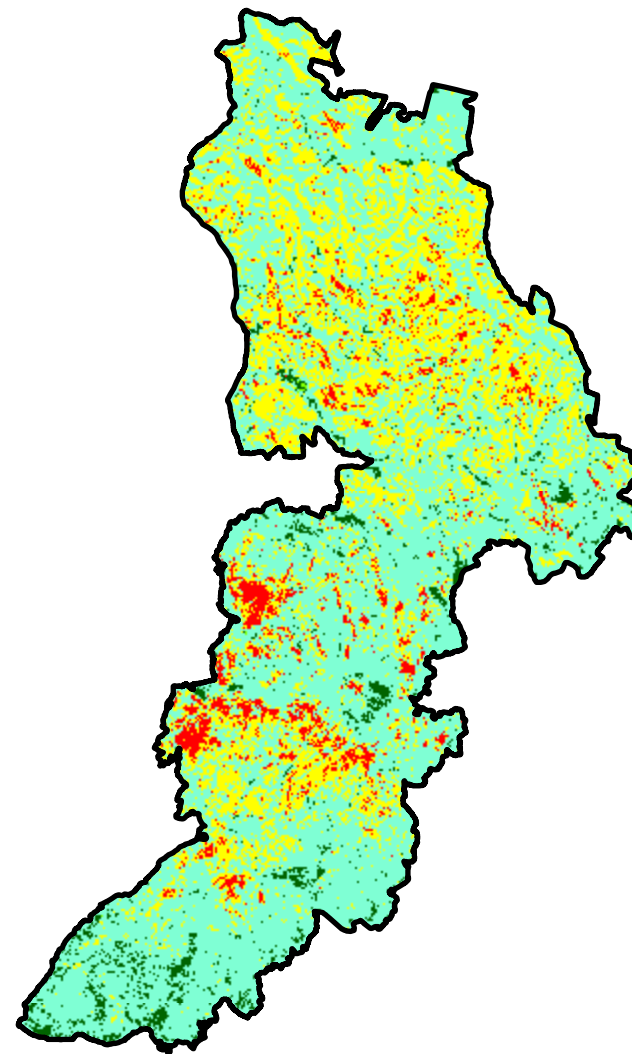
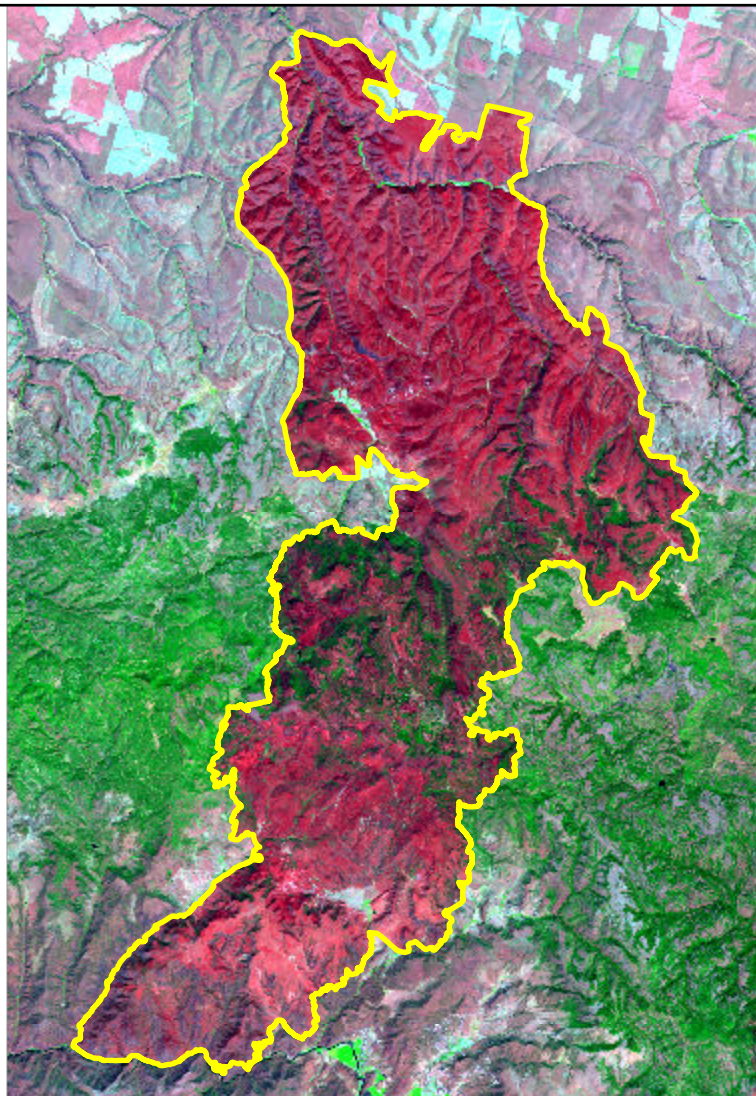


2024 Oregon: LONE ROCK

or4517211996220240713



Latitude: 45° 01' 26.4"
Longitude: -119° 50' 02.4"
Fire Ignition Date: July 13, 2024
Assessment Type: Initial
Pre-Fire Image Date: August 10, 2023 (L9)
Post-Fire Image Date: August 28, 2024 (L9)



This map portrays fire severity for the fire specified in the map title and summarizes proportions of fire severity classes. These data are produced under the Provisional Initial Assessment (PIA) mapping project jointly implemented by the USGS EROS and the USFS GTAC. The PIA mapping project ascertains the locations of fires based on available fire occurrence information provided by federal and state agencies, and other reliable sources. The PIA mapping project reserves the right to correct, update or modify geospatial inputs to this map without notification.

0 7 14
Miles

Acreage of Burn Severity

Burn Severity	Acres
Unburned to Low	5,400
Low	88,174
Moderate	40,171
High	6,941
Increased Greenness	46
Non-Processing Area Mask*	0
Total	140,733