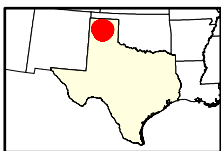
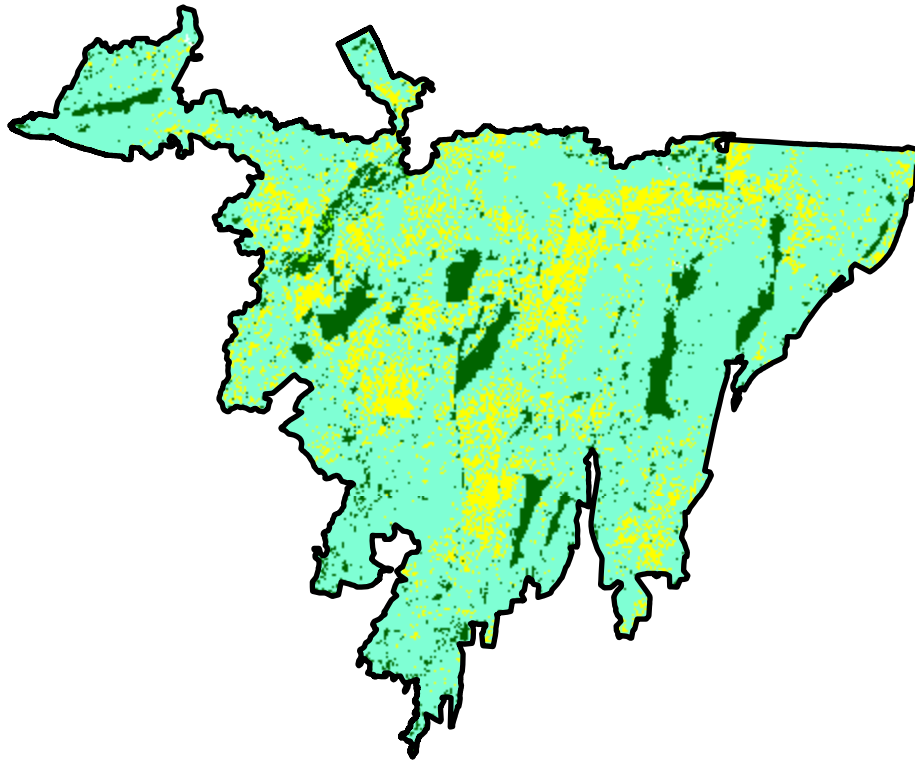
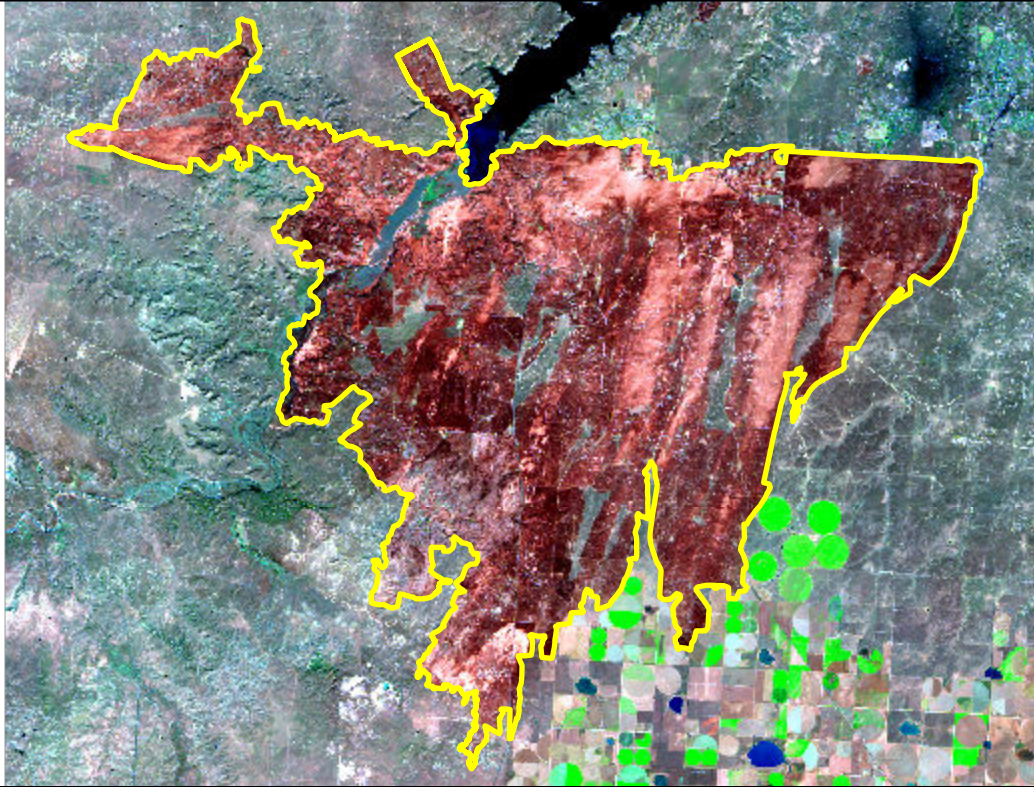


2024 Texas: WINDY DEUCE

tx3563110185120240227



Latitude: 35° 31' 08.4"
Longitude: -101° 38' 42.0"
Fire Ignition Date: February 27, 2024
Assessment Type: Initial
Pre-Fire Image Date: February 24, 2024 (S2B)
Post-Fire Image Date: March 10, 2024 (S2A)



Acreage of Burn Severity

Burn Severity	Acres
Unburned to Low	13,734
Low	108,490
Moderate	23,492
High	0
Increased Greenness	121
Non-Processing Area Mask*	46
Total	145,882

This map portrays fire severity for the fire specified in the map title and summarizes proportions of fire severity classes. These data are produced under the Provisional Initial Assessment (PIA) mapping project jointly implemented by the USGS EROS and the USFS GTAC. The PIA mapping project ascertains the locations of fires based on available fire occurrence information provided by federal and state agencies, and other reliable sources. The PIA mapping project reserves the right to correct, update or modify geospatial inputs to this map without notification.

0 7.5 15 Miles