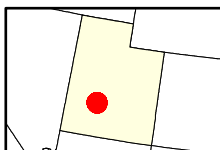
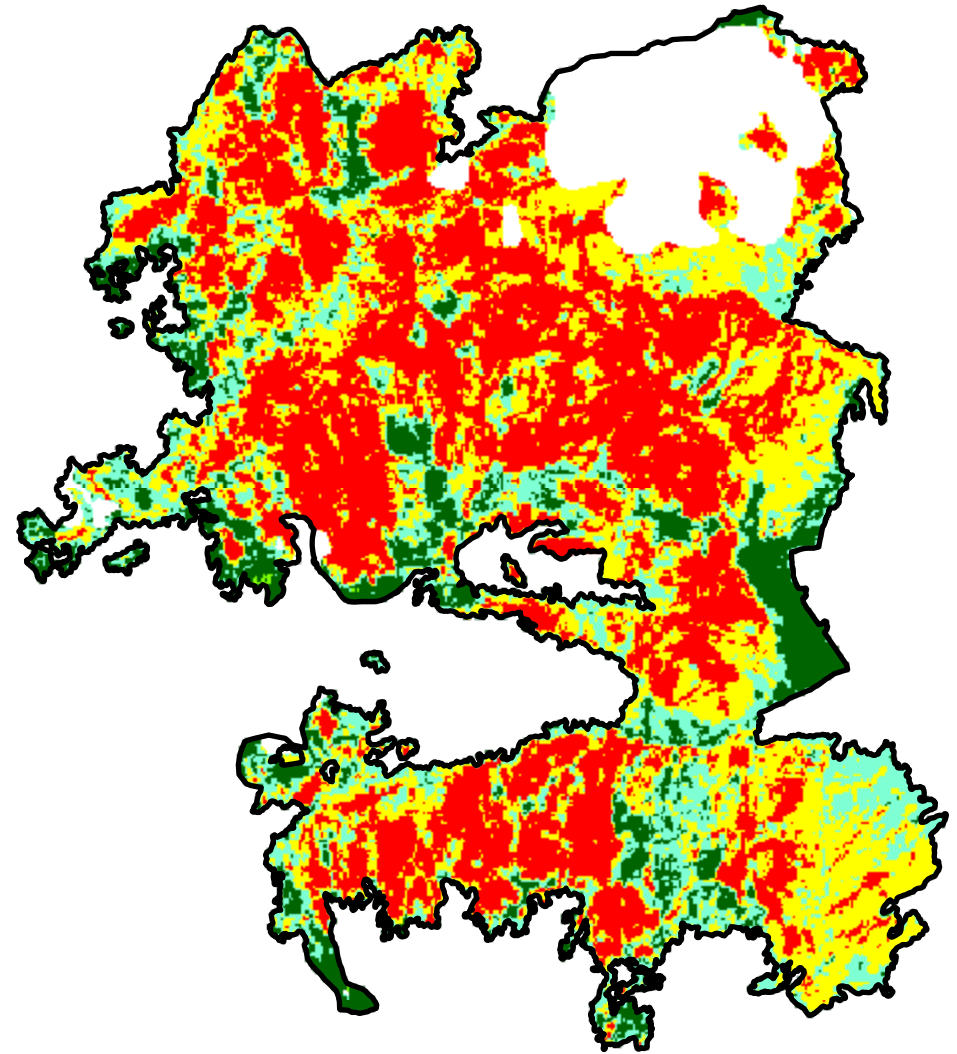
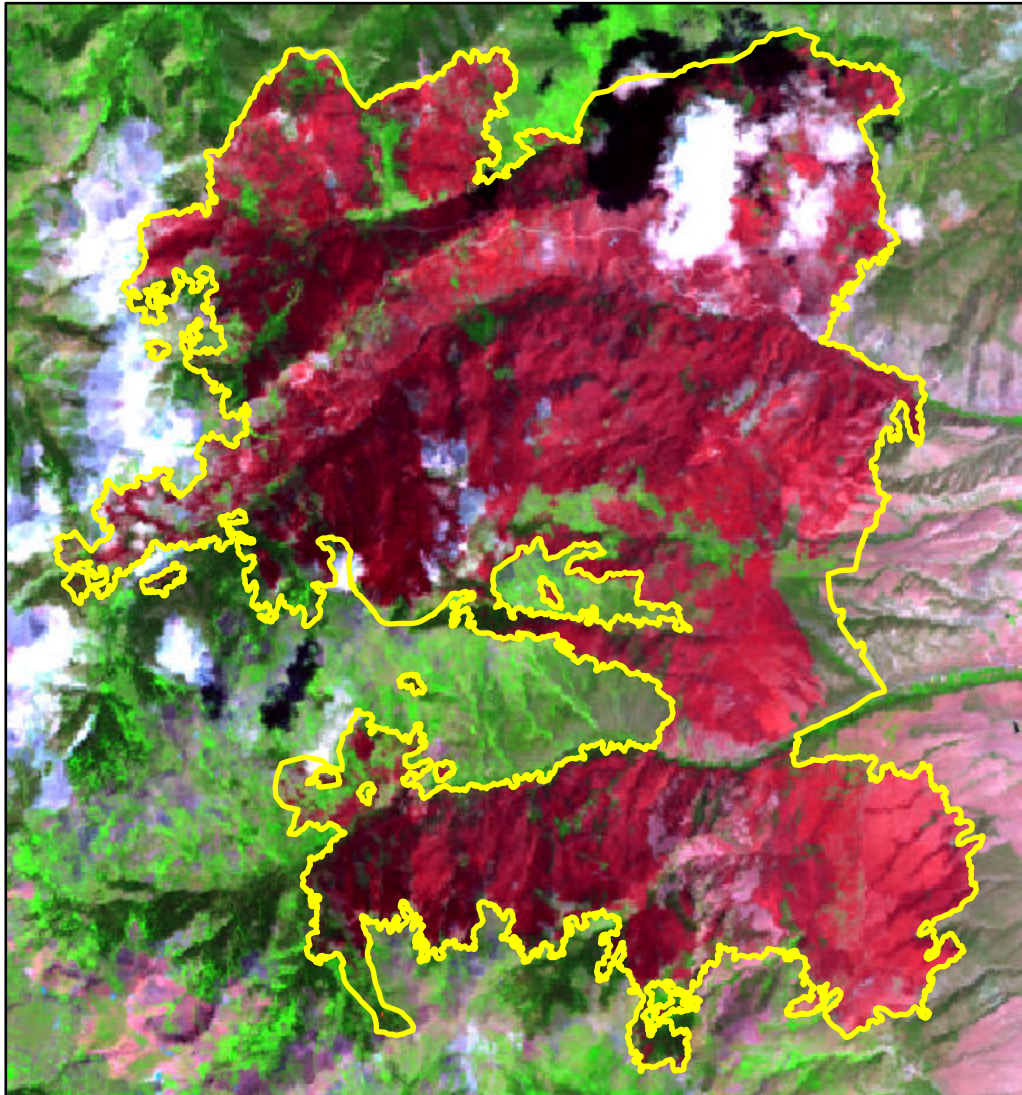


2024 Utah: SILVER KING

ut3848411237420240705



Latitude: 38° 26' 20.4"
Longitude: -112° 20' 02.4"
Fire Ignition Date: July 05, 2024
Assessment Type: Initial
Pre-Fire Image Date: July 01, 2024 (L9)
Post-Fire Image Date: July 25, 2024 (L8)



This map portrays fire severity for the fire specified in the map title and summarizes proportions of fire severity classes. These data are produced under the Provisional Initial Assessment (PIA) mapping project jointly implemented by the USGS EROS and the USFS GTAC. The PIA mapping project ascertains the locations of fires based on available fire occurrence information provided by federal and state agencies, and other reliable sources. The PIA mapping project reserves the right to correct, update or modify geospatial inputs to this map without notification.

0 1.5 3 Miles

Acreage of Burn Severity

Burn Severity	Acres
Unburned to Low	1,878
Low	3,062
Moderate	5,004
High	6,542
Increased Greenness	7
Non-Processing Area Mask*	1,711
Total	18,204