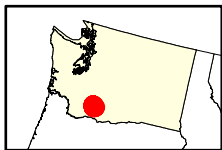
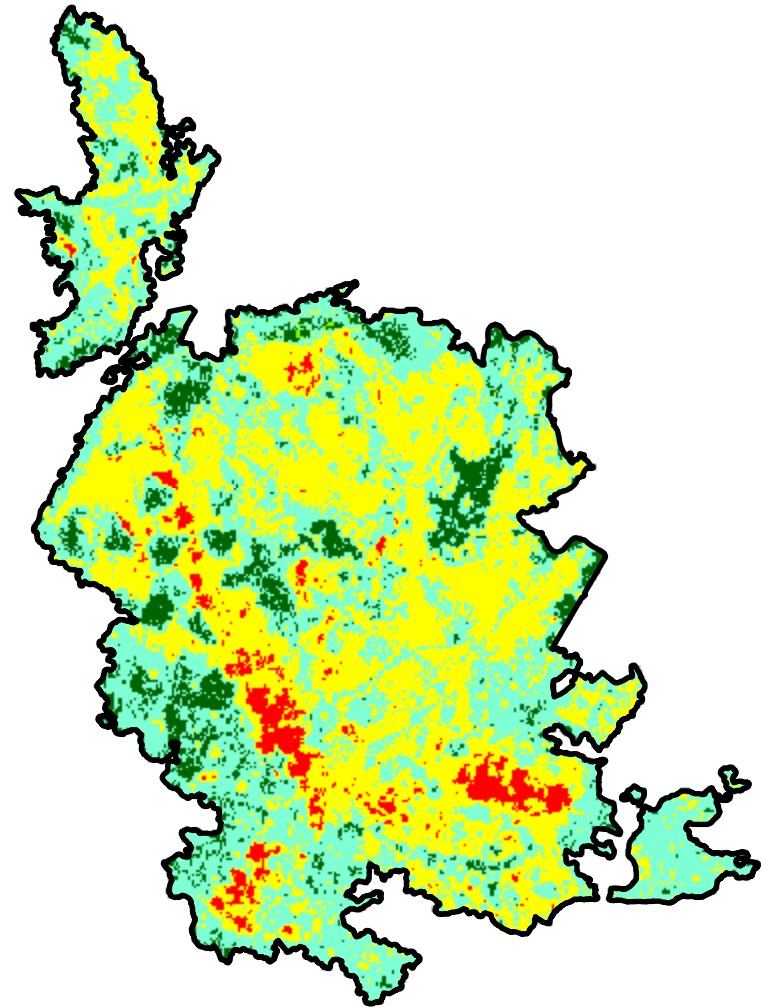
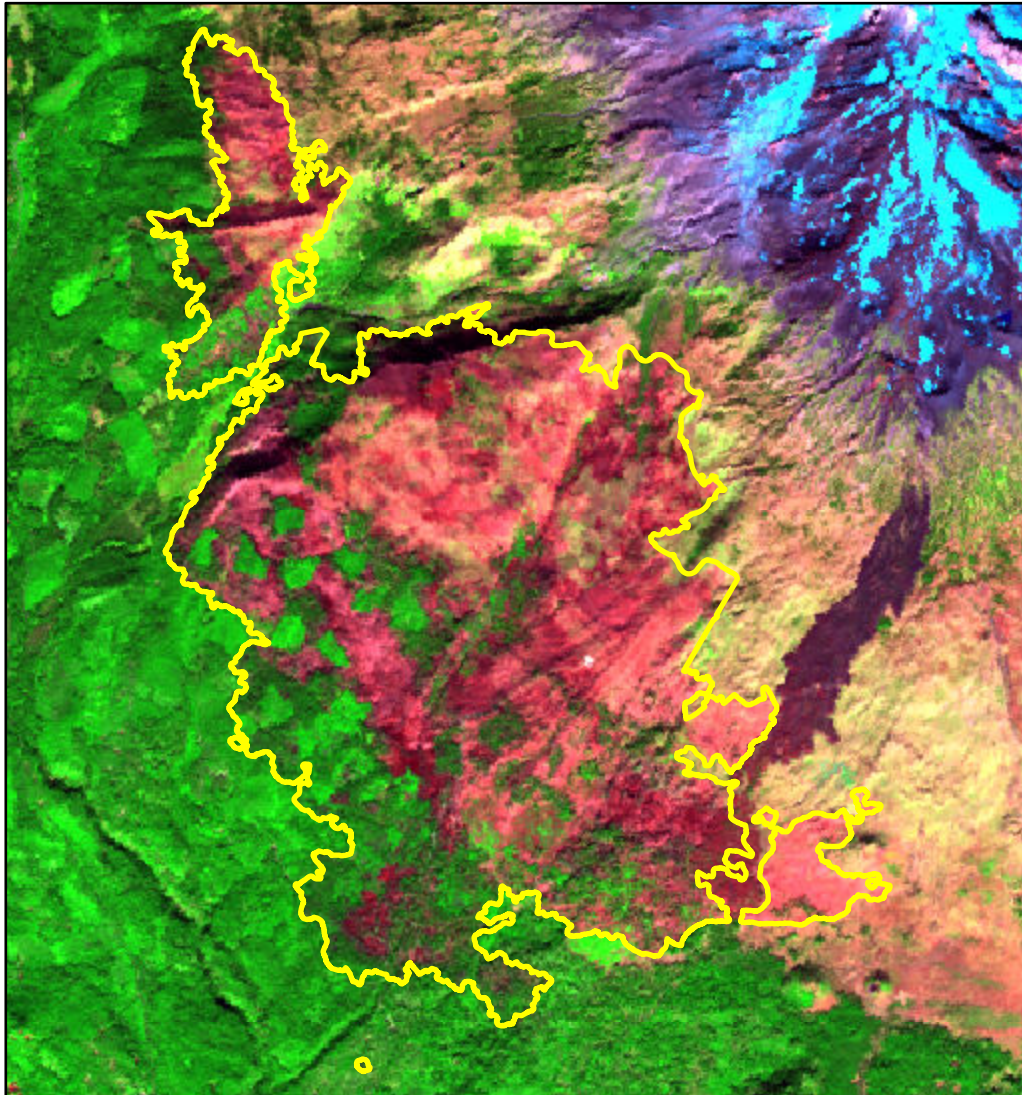


2024 Washington: WILLIAMS MINE

wa4617512160220240805



Latitude: 46° 07' 15.6"
Longitude: -121° 31' 55.2"
Fire Ignition Date: August 05, 2024
Assessment Type: Initial
Pre-Fire Image Date: October 04, 2023 (L9)
Post-Fire Image Date: October 06, 2024 (L9)



This map portrays fire severity for the fire specified in the map title and summarizes proportions of fire severity classes. These data are produced under the Provisional Initial Assessment (PIA) mapping project jointly implemented by the USGS EROS and the USFS GTAC. The PIA mapping project ascertains the locations of fires based on available fire occurrence information provided by federal and state agencies, and other reliable sources. The PIA mapping project reserves the right to correct, update or modify geospatial inputs to this map without notification.

0 2 4 Miles

Acreage of Burn Severity

Burn Severity	Acres
Unburned to Low	1,321
Low	5,890
Moderate	5,641
High	486
Increased Greenness	5
Non-Processing Area Mask*	0
Total	13,343