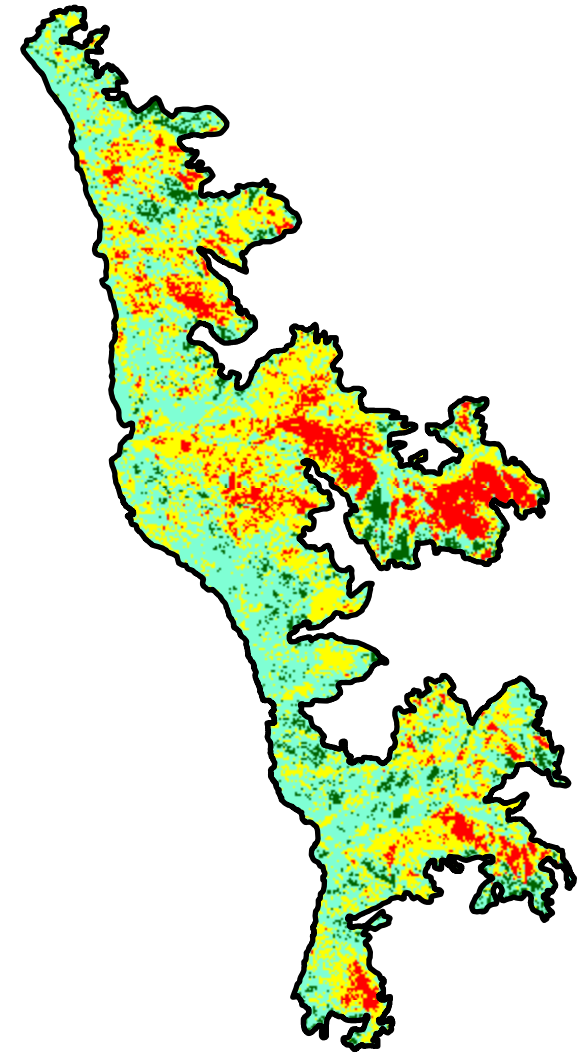
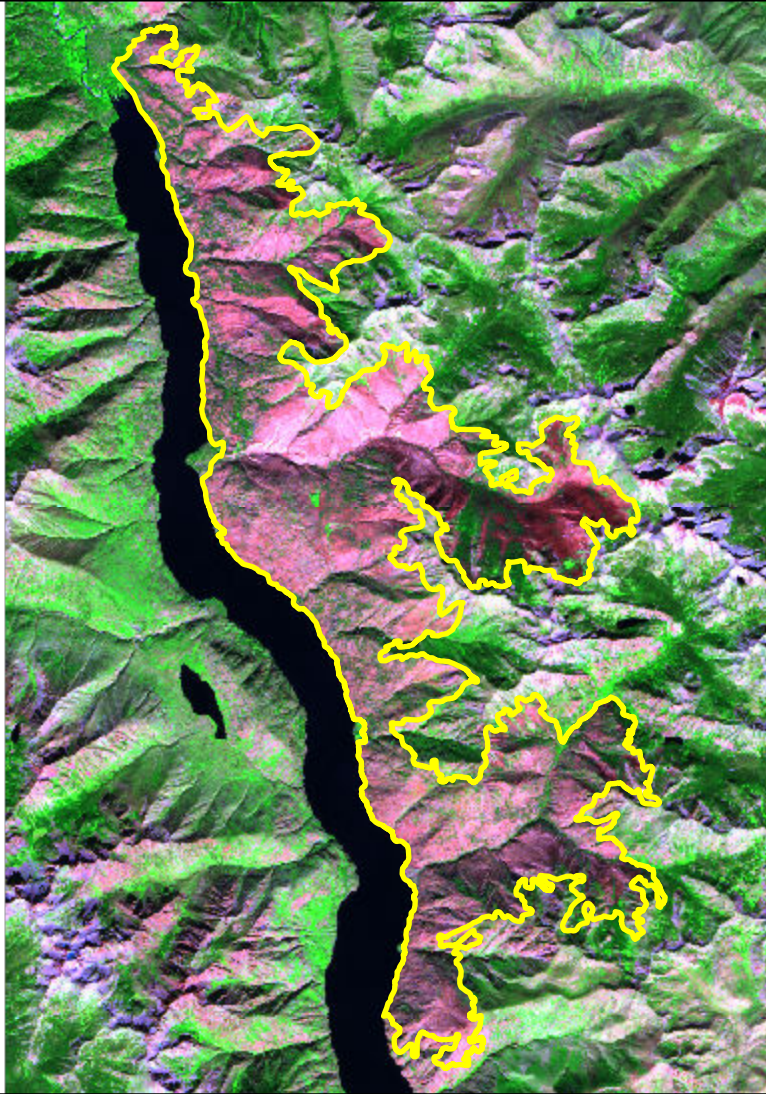


2024 Washington: PIONEER

wa4818312053120240608



Latitude: 48° 13' 19.2"
Longitude: -120° 32' 27.6"
Fire Ignition Date: June 08, 2024
Assessment Type: Initial
Pre-Fire Image Date: August 15, 2023 (S2B)
Post-Fire Image Date: August 29, 2024 (S2B)



Acreage of Burn Severity

Burn Severity	Acres
Unburned to Low	2,826
Low	15,450
Moderate	11,967
High	3,768
Increased Greenness	2
Non-Processing Area Mask*	0
Total	34,013

0 4.5 9
Miles

This map portrays fire severity for the fire specified in the map title and summarizes proportions of fire severity classes. These data are produced under the Provisional Initial Assessment (PIA) mapping project jointly implemented by the USGS EROS and the USFS GTAC. The PIA mapping project ascertains the locations of fires based on available fire occurrence information provided by federal and state agencies, and other reliable sources. The PIA mapping project reserves the right to correct, update or modify geospatial inputs to this map without notification.