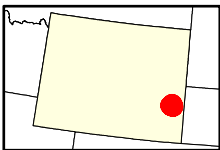
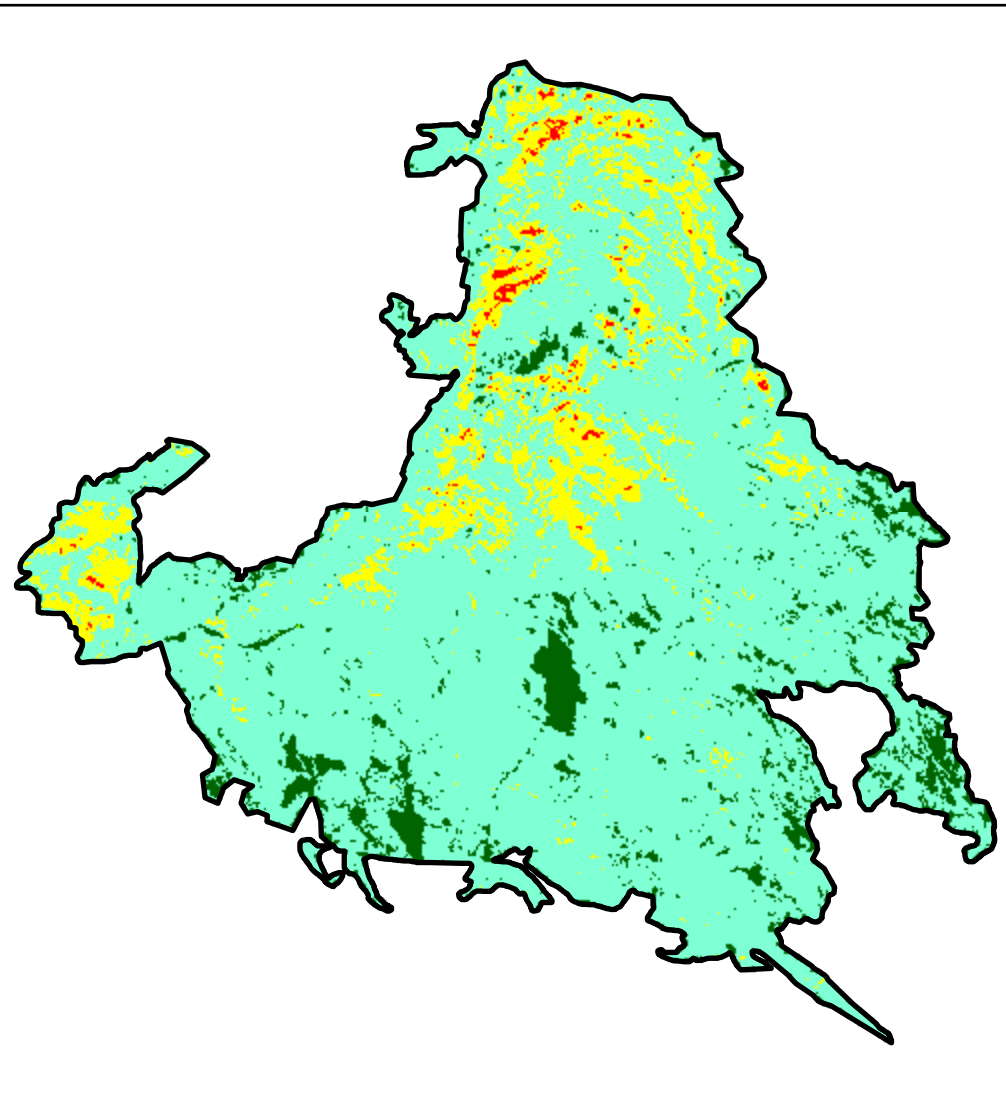
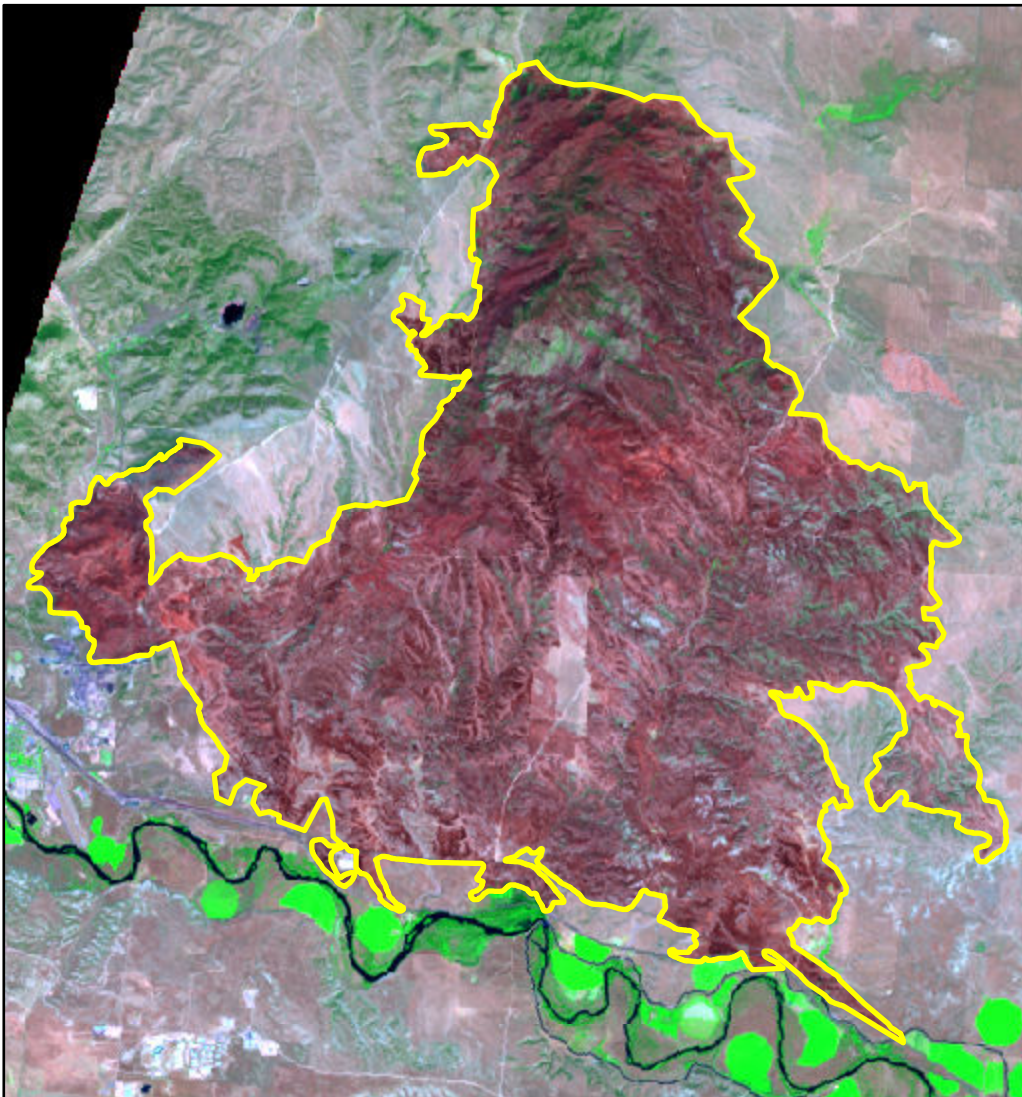


2024 Wyoming: PLEASANT VALLEY

wy4230810472520240730



Latitude: 42° 18' 18.0"
Longitude: -104° 38' 16.8"
Fire Ignition Date: July 30, 2024
Assessment Type: Initial
Pre-Fire Image Date: July 30, 2024 (L9)
Post-Fire Image Date: August 07, 2024 (L8)



This map portrays fire severity for the fire specified in the map title and summarizes proportions of fire severity classes. These data are produced under the Provisional Initial Assessment (PIA) mapping project jointly implemented by the USGS EROS and the USFS GTAC. The PIA mapping project ascertains the locations of fires based on available fire occurrence information provided by federal and state agencies, and other reliable sources. The PIA mapping project reserves the right to correct, update or modify geospatial inputs to this map without notification.

0 2.5 5 Miles

Acreage of Burn Severity

Burn Severity	Acres
Unburned to Low	2,491
Low	22,874
Moderate	3,254
High	156
Increased Greenness	4
Non-Processing Area Mask*	0
Total	28,779