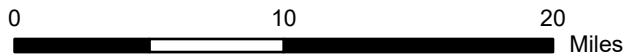
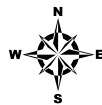
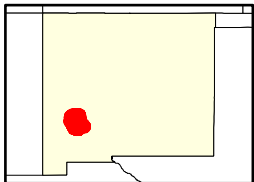
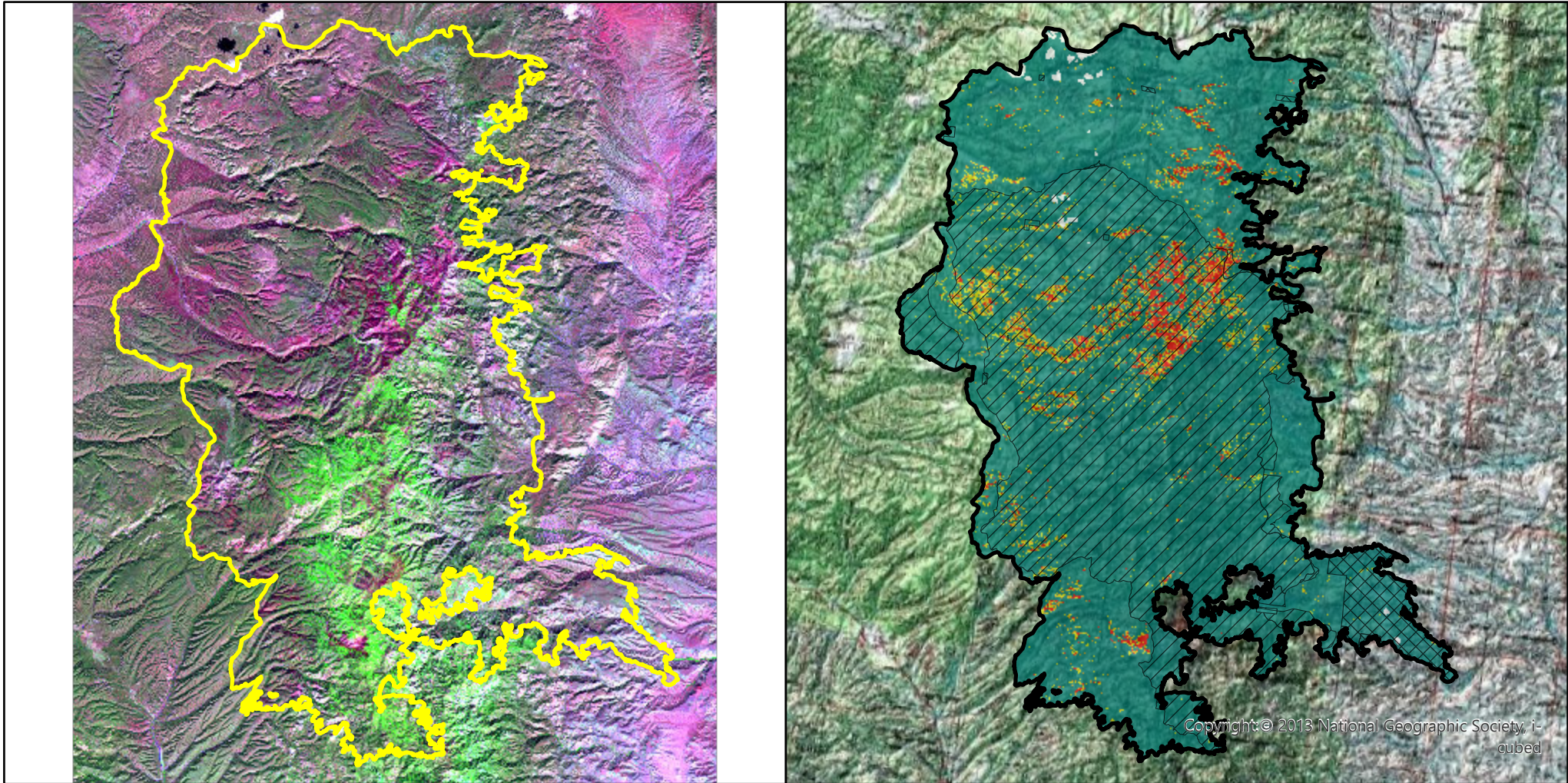


2022 BLACK Fire (NM3320410805920220514)

Post-fire imagery (left, 2022-10-12, Landsat) and modeled RAVG data (right)



- Burn Area Boundary
- FS Wilderness
- Non-FS Land

Basal Area Loss

- 0% - < 25%
- 25% - < 50%
- 50% - < 75%
- 75% - 100%
- Unmappable



Rapid Assessment of Vegetation Condition after Wildfire (RAVG). Map produced by the USDA Forest Service Geospatial Technology and Applications Center (GTAC). To learn more, visit <https://burnseverity.cr.usgs.gov/ravg> or send email to SM.FS.PostFireRAVG@usda.gov.