

The Afghanistan Agrometeorological AAAM Monthly Bulletin



Issue No:41

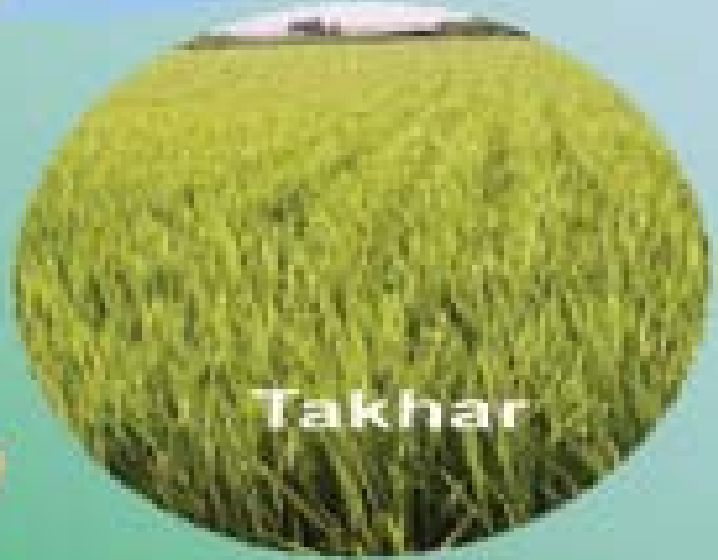
July 2008



Wardak



Kunduz



Takhar

The Agronet Project of UNOS, supported by the US Agency for International Development (USAID), is working together with the Ministry of Agriculture and Irrigation and the Afghan Meteorological Authority (AMA) of Ministry of Transport (MoT).

Agronet Network



UNOSSC



CONTENTS:

Crop Information.....1

- Crop Stage, Crop Condition and Adverse Factor..1-6
- Crop Maps.....7-9



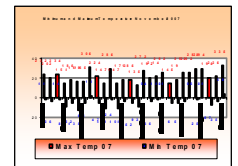
Rainfall Situation.....10

- Rainfall Situation.....10
- Rainfall Graphs11 , 12



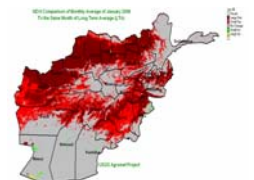
Temperature.....13

- Average Temperature.....13
- Maximum and Minimum Temperature.....14



Normalized Difference Vegetation Index (NDVI)..15

- Comparison of (NDVI).....15



Other Information.....16

- Afghanistan Snow Depth.....16



Summary

Comparison of rainfall data for the month of July 2008 with the same month of last year shows an increase of rainfall during the month of July 2008 over the same month in 2007.

The maximum and minimum temperature for the month of July 2008 around the country, shows that Farah with 46.8 C was the warmest spot in the country.

Zone	Province	District	Station	Wheat Crop Stage	Crop Condition	Adverse Factor	
Central	Kabul	Shakardara	Karizmir	Harvesting	Good better than normal)	Not existed	
		Paghman	Paghman	Harvesting	Normal	Less amount of rainfall caused much lower crop yield than last year (30% less)	
		Sarobi	Sarobi	Already harvested			
	Panjsher	Dara	Dara	Harvesting	Normal	Shortage of Agricultural inputs as tractors threshers and etc	
		Dashtak	Dashtak	Already harvested			
	Parwan	Syagerd	Ghorband				
		Charikar	Charikar				
	Kapisa	Mah-moodraqi	Mahmoodraqi	Already harvested			
		Wardak	Chak				
			Jaghatoo	Jaghatoo	Already harvested		
East Central	Bamyan	Central Bamyan	Bamyan	Grainfilling	Normal	Less amount of rainfall	
		Yakawlang	Yakawlang	Grainfilling	Normal	Less amount of rainfall	
		Panjab	Panjab	Flowering	Normal	Excessive weeds	
Eastern	Nangarhar	Agam	Agam	Already harvested			
		Batikot	Ghaziabad				
		Jalalabad	Sheshembagh				
		Jalalabad	Farm Jadeed				
	Konar	Asmar	Asmar				
		Asadabad	Asadabad				
	Laghman	Mihtarlam	Mihtarlam				
Northeast	Takhar	Bangi	Bangi				
		Taloqan	Taloqan				
	Kunduz	Imam Sahib	Imam Sahib				
		Aqtipa	Aqtipa				
		Chardara	Chardara				
		Kunduz	Kunduz				
	Baghlan	Baghlan Jadid	Pozaishan				
	Badakhshan	Faizabad	Faizabad	Harvesting	Normal	Less amount of rainfall	

Crop Stage, Crop Condition and Adverse Factor (wheat)

Zone	Province	District	Station	Crop Stage	Crop Condition	Adverse Factor			
South Eastern	Khost	Khost	Khost			Already harvested			
		Shimal	Shimal						
		Ali Sher	Ali Sher						
	Paktai	Gardiz	Rohani Baba						
	Paktika	Urgon	Urgon						
		Sharana	Sharana						
		Kairkot	Kairkot						
	Ghazni	Muqur	Muqur			Harvesting	Normal	Less amount of rainfall	
		Bande Sardi	Bande Sardi						
Southern	Nimroz	Zaranj	Zaranj			Already harvested			
	Kandahar	Kandahar	Kandahar						
	Zabul	Qalat	Qalat						
	Urozgan	Tarikot	Tarikot						
	Hilmand	Nad Ali	Nad Ali						
		Greshk	Greshk						
		Nawa	Nawa						
		Lashkargah	Bolan						
	North	Balkh	Dihdadi				Dihdadi		
Nahrishahi			Nahrishahi						
Jawzjan		Sheberghan	Sheberghan						
Saripul		Saripul	Saripul						
		Sozmaqala	Sozmaqala						
Faryab		Maimana	Maimana						
Samangan		Aibak	Aibak						
Western	Badghis	Qalainow	Qalainow			Already harvested			
		Muqur	Muqur						
	Ghor	Chaghcharan	Chaghcharan				Harvesting	Poor (below normal)	Less amount of rainfall
	Hirat	Shindand	Shindand						
		Hirat	Farm Urdokhan						
	Farah	Farah	Farah						

Crop Stage, Crop Condition and Adverse Factor (Maize)

Zone	Province	District	Station	Crop Stage	Crop Condition	Adverse Factor	
Central	Kabul	Shakardara	Karizmir	Due to less amount of rainfall and lack of water for irrigation maize is not cultivated			
		Paghman	Paghman				
		Sarobi	Sarobi	Vegetative	Normal	Lack of rainfall, Shortage of Agricultural inputs	
	Panjsher	Dara	Dara	Planting is in progress	not visible	not seen	
		Dashtak	Dashtak	Planting is in progress	not visible	not seen	
	Parwan	Syagerd	Ghorband	Emergence	not visible	not seen	
		Charikar	Charikar	Emergence	Good (better than normal)	Shortage of Agricultural inputs	
	Kapisa	Mahmoodraqi	Mahmoodraqi	Emergence	Normal	Less amount of rainfall	
	Wardak	Chak	Chak	Due to less amount of rainfall and lack of water for irrigation maize is not cultivated			
		Jaghato	Jaghato				
East Central	Bamyan	Bamyan	Bamyan	Due to less amount of rainfall and lack of water for irrigation maize is not cultivated			
		Yakawlang	Yakawlang				
		Panjab	Panjab				
Eastern	Nangarhar	Agam	Agam	Vegetative	Normal	Lack of rainfall, Shortage of Agricultural inputs	
		Batiktot	Ghaziabad	Vegetative	Normal	Less amount of rainfall	
		Jalalabad	Sheshembagh	Vegetative	Normal	Less amount of rainfall	
		Jalalabad	Farm Jadeed	Vegetative	Normal	Less amount of rainfall	
	Konar	Asmar	Asmar	Vegetative	Normal	Less amount of rainfall	
		Asadabad	Asadabad	Vegetative	Normal	Less amount of rainfall	
	Laghman	Mihtarlam	Mihtarlam	Due to less amount of rainfall and lack of water for irrigation maize is not cultivated			
	Northeast	Takhar	Bangi	Bangi	Vegetative	Normal	Less amount of rainfall
Taloqan			Taloqan	Vegetative	Poor (below normal)	Less amount of rainfall	
Kunduz		Imam Sahib	Imam Sahib	Flowering	Poor (below normal)	Less amount of rainfall	
		Aqtipa	Aqtipa	Flowering	Poor (below normal)	Less amount of rainfall	
		Chardara	Chardara	Flowering	Poor (below normal)	Less amount of rainfall	
		Kunduz	Kunduz	Flowering	Poor (below normal)	Less amount of rainfall	
Baghlan		Baghlan Jadid	Pozaishan	Vegetative	Poor (below normal)	Less amount of rainfall	
Badakhshan		Faizabad	Faizabad	Flowering	Normal	Less amount of rainfall	

Crop Stage, Crop Condition and Adverse Factor (Maize)

Zone	Provinces	Distirect	Station	Crop Stage	Crop Condition	Adverse Factor	
South Eastern	Khost	Khost	Khost	Emergence	Poor (below normal)	Excessive weeds	
		Shimal	Shimal	Emergence	Poor (below normal)	Excessive weeds	
		Ali Sher	Ali Sher	Emergence	Poor (below normal)	Excessive weeds	
	Paktai	Gardiz	Rohani Baba	Emergence	Normal	Less amount of rainfall	
		Gardiz	Tera	Emergence	Normal	Less amount of rainfall	
	Paktika	Urgon	Urgon	Emergence	Normal	Less amount of rainfall	
		Sharana	Sharana	Due to less amount of rainfall and lack of water for irrigation maize is not cultivated			
		Kairkot	Kairkot				
	Ghazni	Muqur	Muqur				
		Bande Sardi	Bande Sardi	Emergence	Normal	Less amount of rainfall	
Southern	Nimroz	Zaranj	Zaranj	Due to less amount of rainfall and lack of water for irrigation maize is not cultivated			
	Kandahar	Kandahar	Kandahar				
	Zabul	Qalat	Qalat				
	Urozgan	Tarikot	Tarikot	Vegetative	Poor (below normal)	Lack of rainfall, Shortage of Agricultural inputs	
	Hilmand	Nad Ali	Nad Ali	Emergence	Poor (below normal)	Less amount of rainfall	
		Greshk	Greshk	Emergence	Poor (below normal)	Less amount of rainfall	
		Nawa	Nawa	Emergence	Poor (below normal)	Less amount of rainfall	
		Lashkargah	Bolan	Emergence	Poor (below normal)	Less amount of rainfall	
North	Balkh	Dihdadi	Dihdadi	Due to less amount of rainfall and lack of water for irrigation maize is not cultivated			
		Nahrishahi	Nahrishahi				
	Jawzjan	Sheberghan	Sheberghan				
	Saripul	Saripul	Saripul				
		Sozmaqala	Sozmaqala				
	Faryab	Maimana	Maimana	Emergence	Poor (below normal)	Less amount of rainfall	
Samangan	Aibak	Aibak	Due to less amount of rainfall and lack of water for irrigation maize is not cultivated				
Badghis	Qalainow	Qalainow					
	Muqur	Muqur					
Ghor	Chaghcharan	Chaghcharan					
Hirat	Shindand	Shindand					
	Hirat	Farm Urdokhan					
Farah	Farah	Farah					

Crop Stage, Crop Condition and Adverse Factor (Rice)

Zone	Province	District	Station	Crop Stage	Crop Condition	Adverse Factor	
Central	Kabul	Shakardara	Karizmir	Due to less amount of rainfall and lack of water for irrigation Rice is not cultivated			
		Paghman	Paghman				
		Sarobi	Sarobi	Vegetative	Normal	Lack of rainfall, Shortage of Agricultural inputs	
	Panjsher	Dara	Dara	Rice is not cultivated			
		Dashtak	Dashtak				
	Parwan	Syagerd	Ghorband	Due to less amount of rainfall and lack of water for irrigation Rice is not cultivated			
		Charikar	Charikar				
	Kapisa	Mahmoodraqi	Mahmoodraqi				
	Wardak	Chak	Chak				
		Jaghatoos	Jaghatoos				
East Central	Bamyan	Bamyan	Bamyan	Rice is not cultivated			
		Yakawlang	Yakawlang				
		Panjab	Panjab				
Eastern	Nangarhar	Agam	Agam	Vegetative	Normal	Lack of rainfall, Shortage of Agricultural inputs	
		Batikot	Ghaziabad	Vegetative	Normal	Less amount of rainfall	
		Jalalabad	Sheshembagh	Flowering	Normal	Not existed	
		Jalalabad	Farm Jadeed	Flowering	Normal	Not existed	
	Konar	Asmar	Asmar	Vegetative	Normal	Less amount of rainfall	
		Asadabad	Asadabad	Vegetative	Normal	Less amount of rainfall	
	Laghman	Mihtarlam	Mihtarlam	Flowering	Normal	Less amount of rainfall	
	Northeast	Takhar	Bangi	Bangi	Flowering	Normal	Less amount of rainfall
Taloqan			Taloqan	Flowering	Poor (below normal)	Lack of rainfall, Shortage of Agricultural inputs	
Kunduz		Imam Sahib	Imam Sahib	Vegetative	Poor (below normal)	Less amount of rainfall	
		Aqtipa	Aqtipa	Vegetative	Poor (below normal)	Less amount of rainfall, Excessive weeds	
		Chardara	Chardara	Vegetative	Poor (below normal)	Less amount of rainfall, Excessive weeds	
		Kunduz	Kunduz	Vegetative	Poor (below normal)	Less amount of rainfall, Excessive weeds	
Baghlan		Baghlan Jadid	Pozaishan	Vegetative	Poor (below normal)	Less amount of rainfall	
Badakhshan		Faizabad	Faizabad	Emergence	not visible	not seen	

Crop Stage, Crop Condition and Adverse Factor (Rice)

Zone	Provinces	Distirect	Station	Rice Crop Stage	Crop Condition	Adverse Factor	
South Eastern	Khost	Khost	Khost	Emergence	Poor (below normal)	Excessive weeds	
		Shimal	Shimal	Emergence	Poor (below normal)	Excessive weeds	
		Ali Sher	Ali Sher	Emergence	Poor (below normal)	Excessive weeds	
	Paktai	Gardiz	Rohani Baba	Vegetative	Normal	Excessive weeds	
		Gardiz	Tera	Due to less amount of rainfall and lack of water for irrigation Rice is not cultivated			
	Paktika	Urgon	Urgon				
		Sharana	Sharana				
		Kairkot	Kairkot				
	Ghazni	Muqur	Muqur				
		Bande Sardi	Bande Sardi				
Southern	Nimroz	Zaranj	Zaranj	Rice is not cultivated			
	Kandahar	Kandahar	Kandahar				
	Zabul	Qalat	Qalat				
	Urozgan	Tarikot	Tarikot	Vegetative	Poor (below normal)	Less amount of rainfall	
	Hilmand	Nad Ali	Nad Ali	Rice is not cultivated			
		Greshk	Greshk				
		Nawa	Nawa				
Lashkargah		Bolan					
North	Balkh	Dihdadi	Dihdadi	Due to less amount of rainfall and lack of water for irrigation Rice is not cultivated			
		Nahrishahi	Nahrishahi				
	Jawzjan	Sheberghan	Sheberghan				
	Saripul	Saripul	Saripul				
		Sozmaqala	Sozmaqala				
	Faryab	Maimana	Maimana				
Samangan	Aibak	Aibak					
Western	Badghis	Qalainow	Qalainow	Rice is not cultivated			
		Muqur	Muqur				
	Ghor	Chaghcharan	Chaghcharan				
	Hirat	Shindand	Shindand				
		Hirat	Farm Urdokhan				
	Farah	Farah	Farah				

Crop Stage, Crop Condition and Adverse Factor Map

Wheat Crop Stage - July 2008



Wheat Crop Condition - July 2008



Wheat - Adverse Factor July 2008



Crop Stage, Crop Condition and Adverse Factor Map

Rice Crop Stage - July 2008



Rice Crop Condition - July 2008

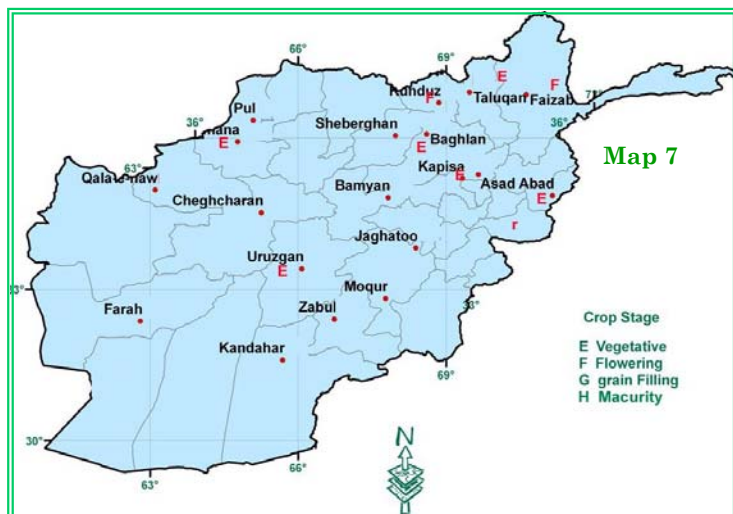


Rice - Adverse Factor July 2008



Crop Stage, Crop Condition and Adverse Factor Map

Maize Crop Stage - July 2008



Maize Crop Condition - July 2008



Maize - Adverse Factor July 2008

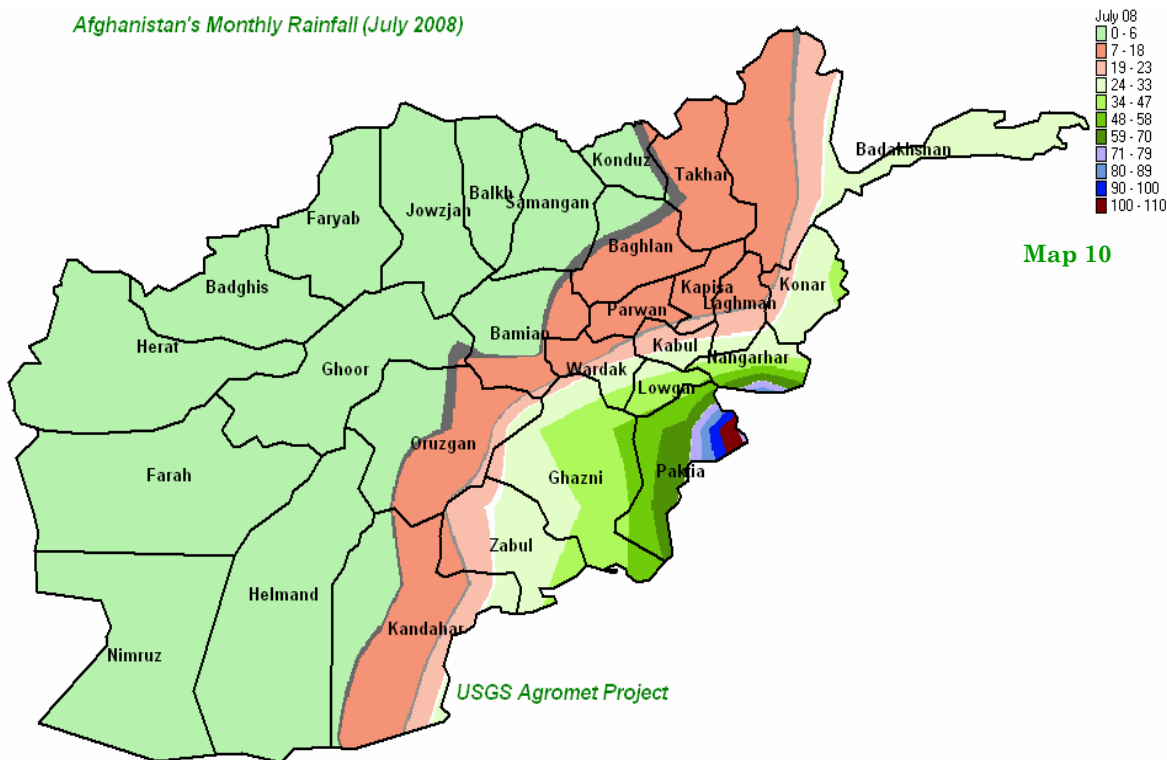


Rainfall Situation

Rainfall for the month of July 2008 was higher compared to the same month in 2007.

Comparison of rainfall data for the month of July 2008 with the same month of last year (chart 1) shows an increase of rainfall during the month of July 2008 over the same month in 2007. However the rainfall had an increase for the month of July but it was not sufficient for agriculture activities in this moment and could not cover the lake of water resources which strongly stressed due to occurrence of inadequate precipitation in the previous months. The percentage +/- of rainfall shown in the next page (Table 1)

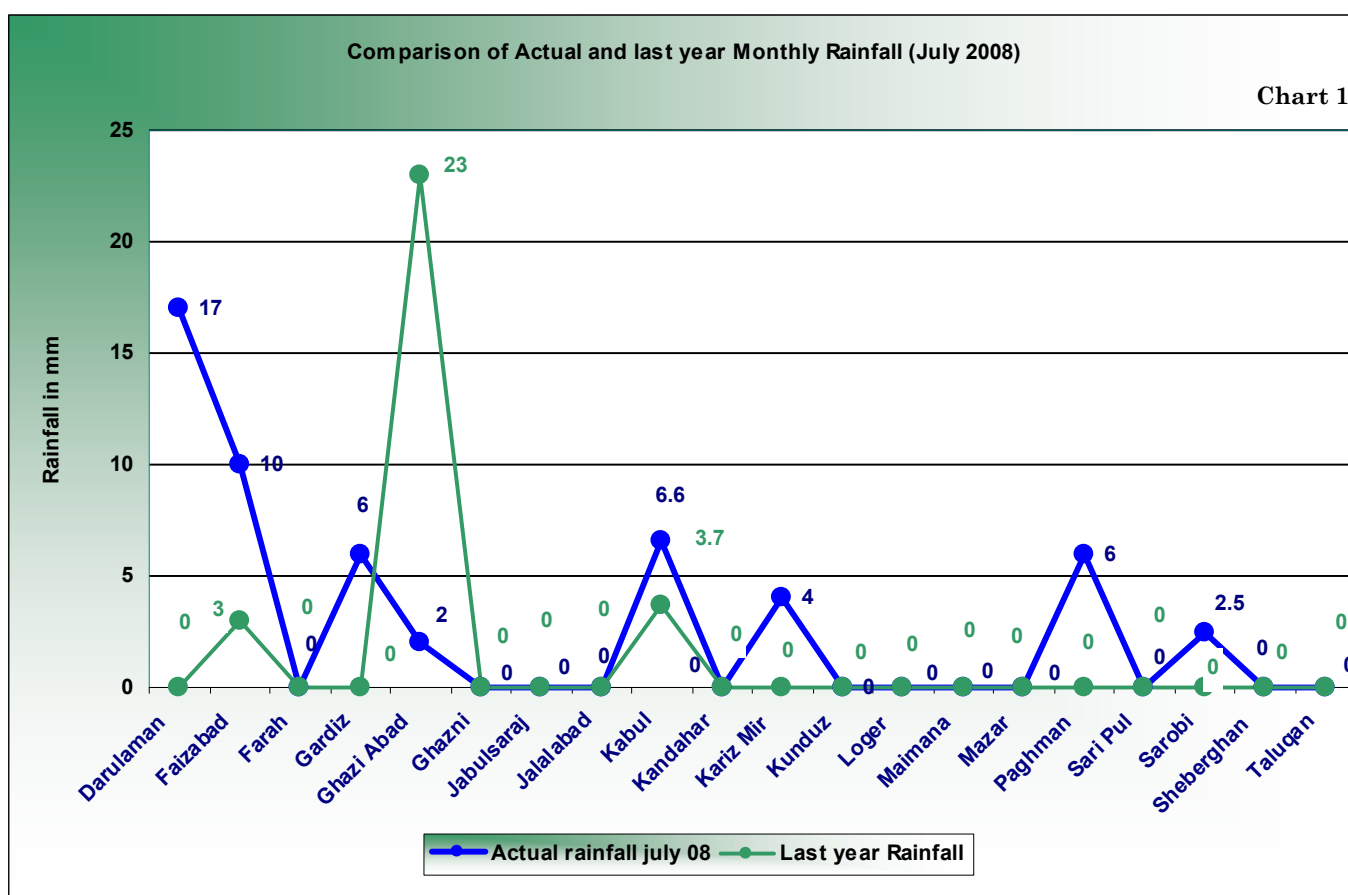
Comparison of rainfall data for the month of July 2008 with same month of long term average (chart 2) shows small decrease of rainfall during the month of July 2008 compared to the same month of long term average. Dryness conditions which still continue had negative impact for crop productions and pastures. The percentage +/- of rainfall shown in the next page (table 2).



Map (10) shows distribution of rainfall for the month of July 2008 in the country. As map(10) shows most amount of rainfall occurred in the Southeastern and some parts in the Eastern regions, and the Northeastern Region and some parts of the capital regions

experienced less amount of rainfall during the month of July 2008. In the remaining regions of the country dryness situation continued.

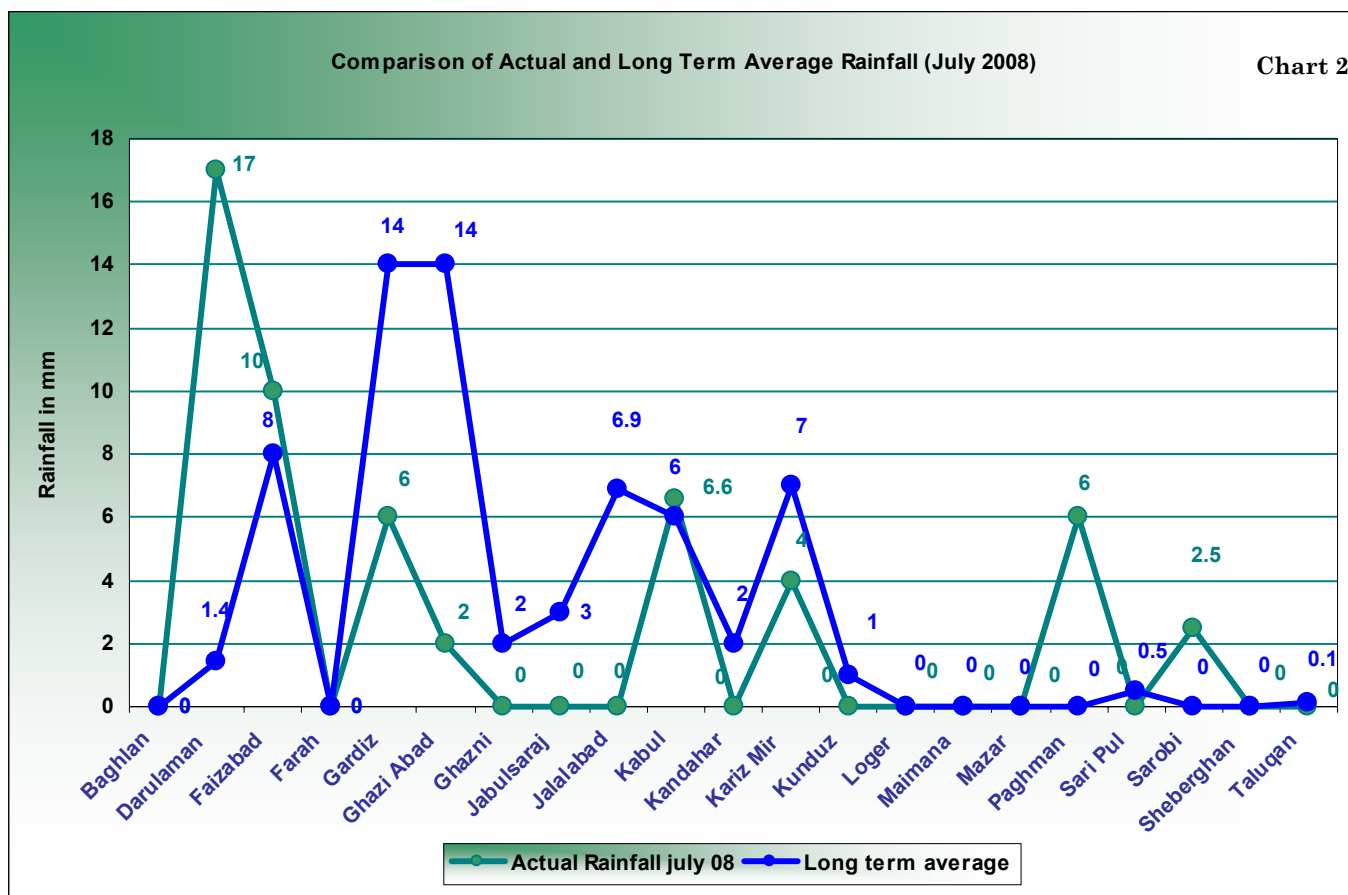
Rainfall Graphs and Table for the Month of July 2008



Name	Actual rainfall July 08	Last year Rainfall	%
Darulaman	17	0	
Faizabad	10	3	900
Farah	0	0	
Gardiz	6	0	
Ghazi Abad	2	23	100
Ghazni	0	0	
Jabulsaraj	0	0	
Jalalabad	0	0	
Kabul	6.6	3.7	560
Kandahar	0	0	
Kariz Mir	4	0	
Kunduz	0	0	
Loger	0	0	
Maimana	0	0	
Mazar	0	0	
Paghman	6	0	
Sari Pul	0	0	
Sarobi	2.5	0	
Sheberghan	0	0	
Taluqan	0	0	

Table 1

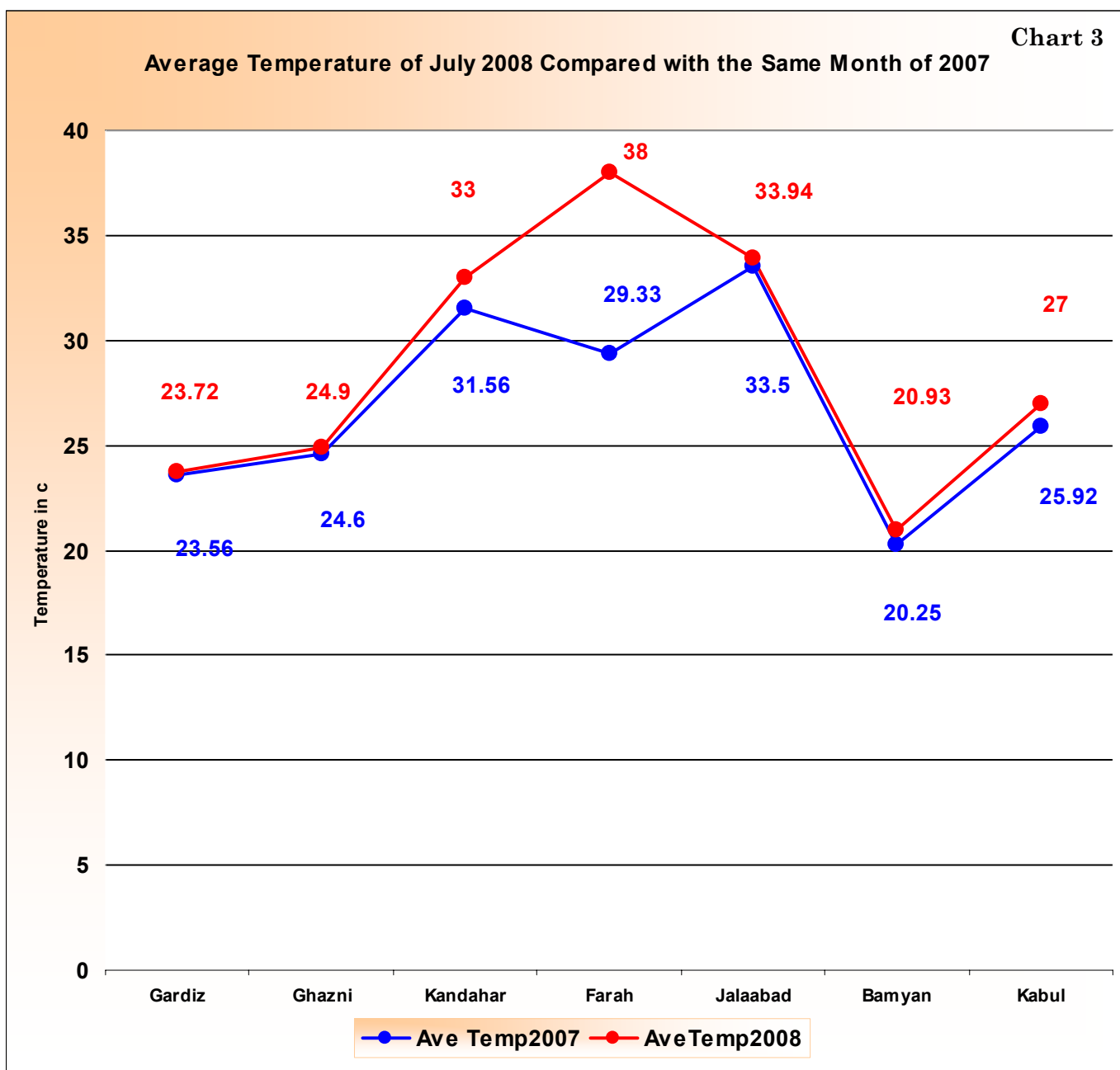
Rainfall Graphs and Table for the Month of July 2008



Station	Actual Rainfall July 08	Long term average	%
Baghlan	0	0	
Darulaman	17	1.4	1600
Faizabad	10	8	900
Farah	0	0	
Gardiz	6	14	500
Ghazi Abad	2	14	100
Ghazni	0	2	-100
Jabulsaraj	0	3	-100
Jalalabad	0	6.9	-100
Kabul	6.6	6	560
Kandahar	0	2	-100
Kariz Mir	4	7	300
Kunduz	0	1	-100
Loger	0	0	
Maimana	0	0	
Mazar	0	0	
Paghman	6	0	
Sari Pul	0	0.5	-100
Sarobi	2.5	0	
Sheberghan	0	0	
Taluqan	0	0.1	-100

Table 2

Average Temperature for the Month of July 2008

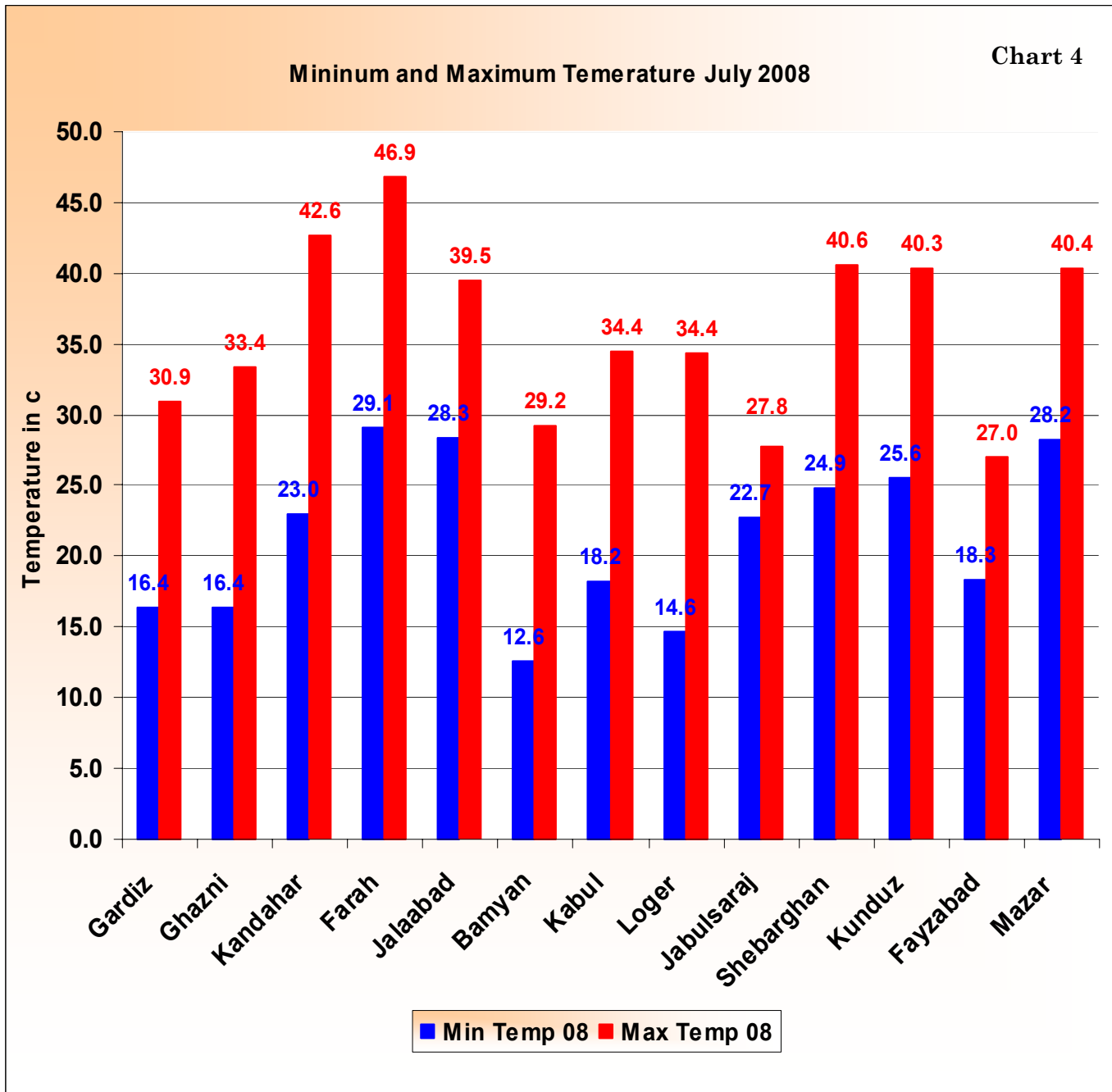


Temperature for the month of July 2008 had increase compared to the same month in 2007.

Temperature for the month of July 2008 was higher compared to the same month in 2007 across the country. Comparison of temperature data for the month of July 2008 with the same month of last year (chart 3) shows small increase of temperature during the month of July 2008 over the same month in 2007 across the country.

However there is no significant change occurred in temperature regime during the month of July 2008 over the same month of last year but higher temperature in the previous months had negative impact particularly on snow extent in snow coverage area.

Temperature for the Month of July 2008

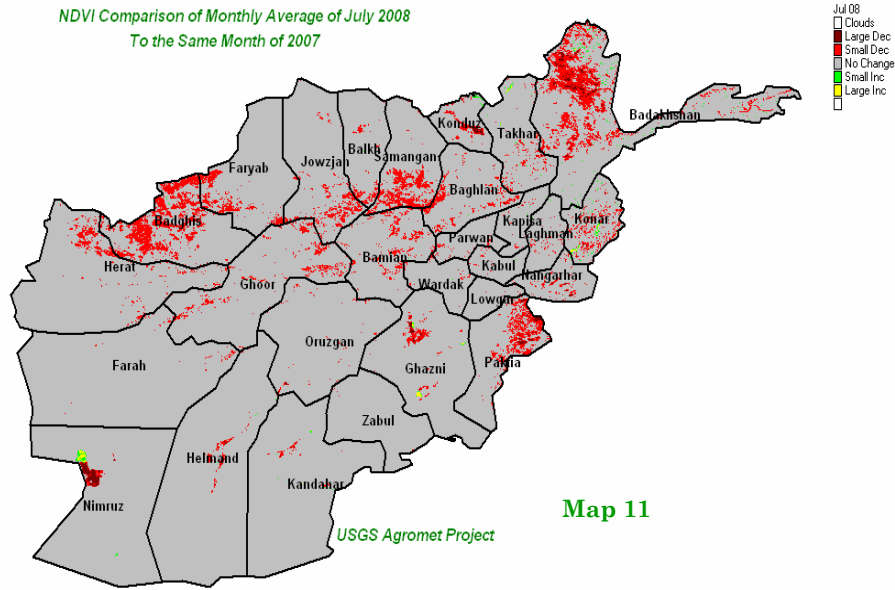


Farah with 46.8 °C was the warmest Spot in the Country.

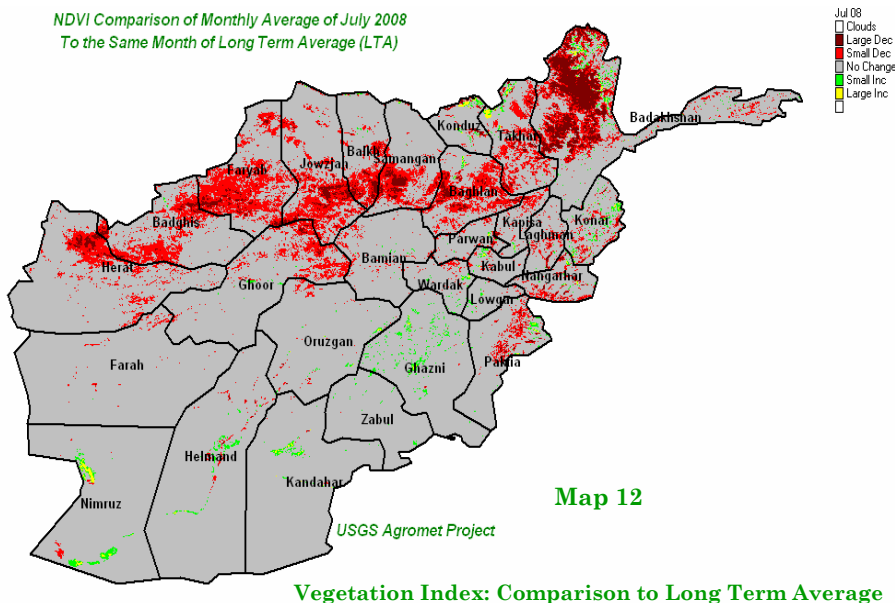
Chart (4) shows maximum and minimum temperature for the month of July 2008 around the country, as chart (4) shows Farah with 46.8 C was the warmest

spot during the month of June 2008 and Bamyān with 12.5 ° C had lowest temperature.

Comparison of NDVI July 2008



Vegetation Index: Comparison to Last Year



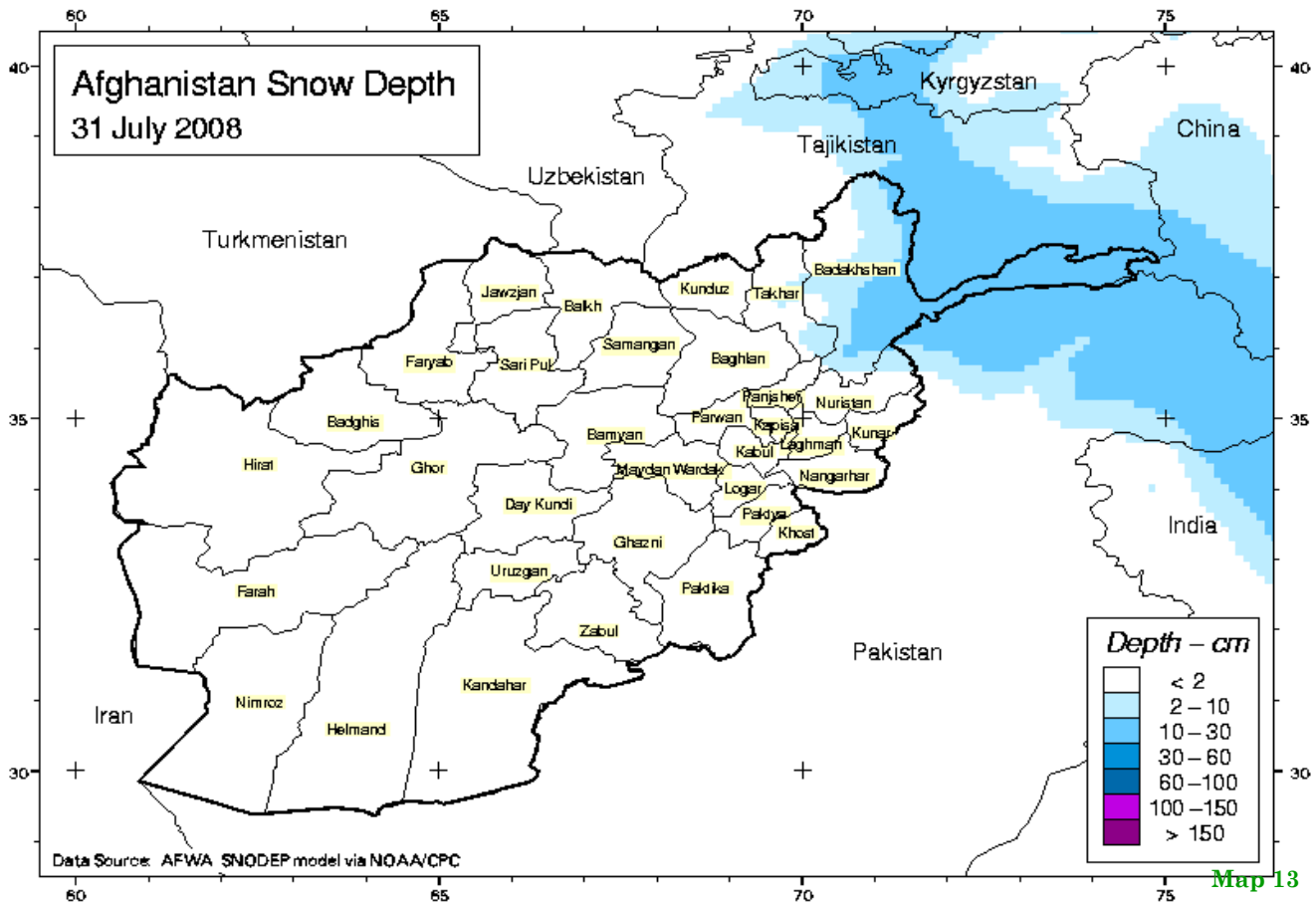
Vegetation Index: Comparison to Long Term Average

NDVI: July 2008

Comparison of monthly average of NDVI for the month of July 2008 (map 11) with the same month of long term average (map 12) shows large decrease of NDVI in some parts of the Northeastern region during the month of July 2008 over the same month of long term average, and small decrease occurred in NDVI value in the Northwestern regions and some parts of the Northern region.

There is no change of NDVI in the remaining regions of the country during the month of July 2008 compared to the same month of long term average.

Afghanistan Snow Depth for the month of July 2008



During the end of the wet season, October – November high temperature depleted snow pack earlier than normal. High temperature has also led to increase evaporation from reservoirs. This combination of factors threatens water availability for agriculture

Map (13) shows the remaining snow in the end of July 2008 in the Northwestern region, which the snow depth has been recorded 10 up to 30 cm in above mentioned area.

For more information please contact:

Mohammad Fahim Zaheer
fahim.zaheer@agriculture.gov.af
fahimzaheer@gmail.com
 Cell: 0799-793334/ 077-2214307

Or

Naseer Ahmad Fayez
fayez_naseerahmad@yahoo.com
abc.fna.2008@gmail.com
 Cell:0700-476311 / 0799-314064

You can download the Afghanistan’s Agromet Bulletins from these sites:

<http://www.agriculture.gov.af/farsi/weather.htm>

<http://afghanistan.cr.usgs.gov/agro.asp>